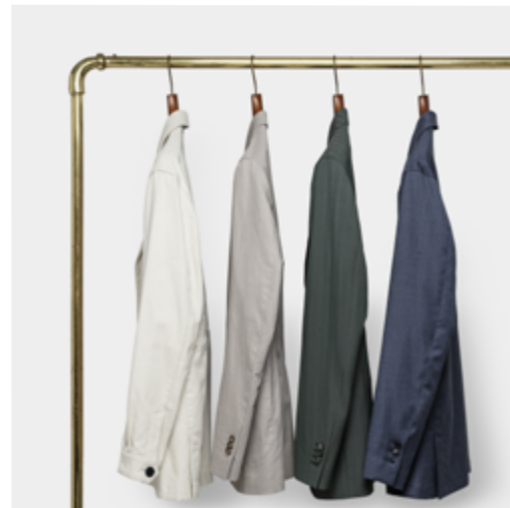


# SPRING & SUMMER '22

The New Collection

Made to Measure





# Contents

---

05	<b>Informal Jackets</b>
17	<b>Casual Cotton Suits</b>
19	<b>Knitwear</b>
35	<b>Shoes</b>
43	<b>Technical Coats</b>
47	<b>The Pants Guide</b>
53	<b>Seasonal Jacket Collection</b>
69	<b>Essentials for Summer</b>
81	<b>What to Wear to a Summer Wedding?</b>
99	<b>Seasonal Suit Collection</b>
113	<b>Fancy Linings</b>
115	<b>Ties &amp; Pocket Squares</b>
117	<b>The One-Piece Collar Shirt</b>
119	<b>Seasonal Shirts</b>
129	<b>Ready-to-Wear Order System</b>
131	<b>New in GoCreate</b>
133	<b>(Y)our More Sustainable Picks for Summer</b>
137	<b>Preview Fall &amp; Winter '22</b>
139	<b>Any Questions?</b>

# A modern take on traditional tailoring

While the sartorial options of men today have become more varied and the rules less rigid, the age-old benefits (and expectations) of looking sharp will, we predict, always be current. Knitwear, drawstring trousers, sneakers, informal and unconstructed jackets, plus jersey fabrics of all weights, types and colours — the last 21+ months have solidified the status of these more casual features as some of the well-dressed man's basic building blocks. If you ask us, this means the world of menswear has become a lot more interesting! Not to mention more comfortable.

For summer, the key is to take these modern ingredients, mix them with classic staples, and give them both a cool twist: with light, effortless and breathable fabrics, short sleeves where possible and the thinnest of waterproof protection when necessary. Thankfully, we've been able to create a SS22 collection brimming with precisely these elements.

Given the relevance of a smart-casual philosophy, and the successful launch of the 2.5-button and safari jackets last season, we're also delighted to be bringing you a third informal option: the utility jacket (p. 5). With a similarly more relaxed silhouette, big patch pockets and a 5-button closure up to the neck, the utility jacket embodies the space between your more classic coat and the traditional jacket — its ultimate character and function depending largely on your choice of fabric. For an all-round summer complement, you can't go wrong with 100% linen or a linen blend. Or choose from our entire range of suit and jacket fabrics, 365 and seasonal. Add a pair of matching trousers, e.g., in one of (y)our many SS22 stretch cottons, and you'll have the option of an informal suit or separates.

Also fresh to the table, this season means the hard launch of (y)our own line of custom knitwear (p. 19). If you haven't yet been introduced, then get ready to meet your nine new knitwear models — from polos and crew necks to various button and zip styles — including one brand-new casual closure option: the hoodie with drawstrings. All made in Italy, on demand, using 3D knitting machines for a luxurious, seamless appearance. Available now in 26 colours of single or double-ply Merino wool, with more qualities to be added later this spring.

Speaking of new alternatives to your traditional shirt, you can now switch things up with its one-piece collar counterpart (p. 117), crafted for summer in an airy linen or a linen-cotton blend and finished with short sleeves. Complete the look with a pair of custom sneakers (see p. 39 for recent improvements) or with the 'Blake light' and Vibram vi-lite: a brand-new, ultra-light shoe make and sole, for the style of a dress shoe

with the comfort of a sneaker (p. 37). For modern summer outerwear, a windproof and water-repellent technical fabric is the perfect candidate (see p.43, including new technical additions). Whatever the look, the modern man's summer wardrobe allows you and your customers plenty of room to play — and more ways than ever to get the most out of each and every item.

What's more, it's almost wedding season! As couples around the world (and their guests) prepare to make up for lost time, spring and summer 2022 is poised to be one of the most epic to date. Especially given the current increase of menswear options, you and your customers may be wondering 'what means what' when it comes to event dress codes. Use our spring and summer wedding style guide (p. 81, applicable to all special events) to help find clarity and inspiration in the lead-up to the big party.

Boiling it all down: summer is on its way, hurrah! Consider this magazine a taste of the swatches and products soon to be arriving at your doorstep — and a chance to get informed and inspired for the upcoming long (and hopefully more carefree) summer days on the horizon. Then, prepare your shop by ordering your samples and ready-made series at your convenience (24/7/365). Whatever you need, we're here for you!

Cheers,  
Team Munro Tailoring



# Informal Jackets

## New model: the utility jacket with buttons

After a successful release of the informal jacket last season (2.5-button and safari), we're thrilled to be adding another more casual piece to (y)our products: the utility jacket with buttons.

Featuring a more relaxed silhouette similar to the 2.5-button and safari jacket models, our new utility jacket with buttons has a shirt-style collar, large patch pockets on the chest and hips, and a centre-front closure with five buttons up to the neck.

For summer, we recommend the utility jacket in a seasonal linen or linen blend to keep you cool and comfortable. Or — for a heavier, more robust look that's every bit as breathable — a cotton twill. Conversely, those in damper climates may prefer a technical fabric for extra utility: lightweight and water-repellent, perfect for layering or as a standalone jacket. Have a particular vision? Feel free! All of (y)our suit and jacket fabrics are available for this garment.

Use the informal jacket FitProfile or, for customers who don't yet have an informal jacket, simply use the FitAdvisor to easily help your customer find their ideal FitProfile based on their jacket FitProfile. Like always, we recommend ordering a TryOn series to help manage your customers' expectations in terms of fit and feel.

### **Where did the utility jacket come from?**

Dating back to 19th-century France, where the utility jacket became daily workwear for railroad workers, labourers and farmers, our version is inspired by the original. Made from durable cotton drill or moleskin, these jackets were initially constructed to store work tools, and made in a colour intended to mask dirt and stains.

Over the years, the jacket has secured its place as a style staple. Sturdy yet soft and comfortable, and practical yet simple and elegant. Its clean silhouette and timeless look have made it into a classic garment, so far largely immune to style trends.



# Model: The utility jacket with buttons



8765

Like the 2.5-button and safari jackets, (y)our utility jacket model features a more relaxed silhouette. With large patch pockets on the chest and hips, a shirt-style collar and a centre-front closure with five buttons up to the neck.



*5-button front closure*



*Shirt-style collar*



*Completely unconstructed*



*Cuffs with pleats*

Pre-selected utility jacket design options include a 5-button closure, cuffs with 1 button, one patch chest pocket with a flap and two patch side pockets.



*Large chest and side patch pockets*

# How to wear the utility jacket?

Perfect for a walk in the park or forest, or anytime you're in search of a smart, weekend-ready casual look. Wear it over knitwear or a polo, and pair it with (drawstring) trousers in the same fabric, jeans or chinos.



Utility jacket: 5658  
Shirt: SH00162  
Trousers: 5658  
Shoes: SDE09

Utility jacket: 5658  
Knit: K10004  
Jeans: WAS005  
Shoes: SNE07

Utility jacket: 5658  
Shirt: SH00258  
Trousers: 5604  
Shoes: SUS06



## What's your (informal) style?

Have your informal jacket (safari, utility with buttons or 2.5-button) made with our pre-selected design options or select your own.

Tip: combine these jackets with (y)our drawstring trousers to create workwear that's comfortable, casual and sharp.

### Safari jacket

Originally intended for outdoor use in the African bush, our safari (inspired) jacket balances practicality and tradition by including four patch pockets to store your belongings and an internal drawstring to subtly taper the silhouette across the waist.

8687

### Utility jacket with buttons

Inspired by the daily workwear of 19th-century French farmers and labourers, the utility jacket features a more relaxed silhouette similar to (y)our 2.5-button and safari jacket models. With large patch pockets, a shirt-style collar and a centre-front closure with 5 buttons up to the neck.

Cotton 021

### 2.5 button-front jacket

The 2.5-button jacket is inspired by our traditional jacket. The difference? It has a wide, shirt-style collar and is completely unconstructed: no canvas and only a light interlining.

8801

# Customise your informal jacket

## Mix & match the pocket styles

Most men want their clothes to look good, of course — but functionality is at least as important. Nowhere is this more apparent than in the case of pockets: more often than not, men use them to store their phone, wallet and keys. Suffice to say, choosing wisely is more than a matter of taste. That's why, starting this season, we've made it possible for you to mix and match the different pocket styles available for your informal jackets' side and chest pockets.



## Safari pockets (side and/or chest)

A patch pocket with a flap, designed to increase the carrying capacity. Available without a button — or with, to secure the flap.

## Flap side pockets and rounded welt chest pocket

The most formal option: the flap side pocket is essentially a jetted pocket with a flap stitched to the upper welt, designed to keep the contents of your pocket secure without interrupting the classic silhouette.



## Patch pocket (side and/or chest)

Patch pockets are the most casual pocket option. Sewn on the outside of the jacket. The chest pocket is available with or without a flap.





# Informal Jackets

## Improvements

We didn't stop at the successful launch of (y)our 2.5-button and safari jackets last season: we gratefully listened to your feedback (thank you!) and continued to search for ways to craft a better product. Here are the aspects we've improved. In the coming months, we'll continue dotting the i's and crossing the t's, and we'll be sure to keep you updated as we go.

Internal elastic cord: now only on the back panels, allowing you to lower or raise its height via a specially designated FitTool (internal elastic cord > raise/lower).



Hanger loop: now made from thin ribbon instead of fabric, to be undetectable on the back of the neck when worn.

Collar: improved to cover the entire collar stand.

Seam construction: thinner and more alteration-friendly.



Pictured here in sand: a safari jacket (left), drawstring trousers (right), chinos and 5-pocket pants (below).



# Casual Cotton Suits

## 365-seasonal collection

On top of the seasonal summer collection, we're also adding a new quality to (y) our 365-Seasonal suits: heavy-but-soft cotton with stretch (465 g/m<sup>2</sup> — you might recognise it from our pants collection). A great casual choice for summer when crafted as an unlined suit. Simply add these new swatches to your 365 Cotton & Linen bunch and you're set to go! Available in 18 colours.

What (else) is there to love about a cotton suit? Its versatility. With the option of wearing it as a separate, either by combining the trousers with knitwear or by mixing the jacket with jeans.

### **New: metal buttons**

Introducing 2 new, contemporary metal suit buttons: one in antique pewter and one in glossy antique brass.



Cotton 025

# Knitwear

(Y)our brand-new line of custom-made knitwear

After a successful soft launch, it's now a super-soft and elegant touch. Available as official. Starting this season, you and your a polo, crew neck, full-zip hoodie and more. customers can enhance your wardrobes In your choice of 26 colours, two weights with even more functional and comfortable — single-ply (lightweight and refined) or basics. Made in Italy, on demand, using 3D double-ply (for a winter-ready look and feel) knitting machines for a luxurious, seamless — and 9 customisable models, including appearance. Interested? Your business this season's newest closure option: the consultant will be happy to help. hoodie with drawstrings.

Thanks to Merino wool's ability to combine Plus, we'll be adding more qualities warmth with exceptional breathability, (y)our sometime this spring. We're currently in the new custom knitwear is ideal for both the final phase of yarn selection, so we can't heart of winter and the in-between seasons. share all the details just yet, but cashmere Naturally elastic and resistant to stains, odour is definitely on the menu: pure and in two and oil (i.e., low maintenance), we use only blends — one with silk and one with cotton. extra-fine Merino wool from Italy to ensure

# Knitwear models

With nine basic models to choose from, you can create your own custom knitwear for nearly every style and occasion.



K10016

## Half-zip

Highly adaptable for unpredictable weather.



K10014

## Crewneck

A comfortable everyday garment with a rounded neckline.



K10027

## Polo

For a sharp look, that's also a bit easier to pull on over your head.



K10006

## V-neck

A slightly more formal garment as its neckline allows more visibility of the shirt and tie.



K10013

## Turtleneck & mock neck

A high, closely fitted neckline that is worn folded down. Also available with a slightly lower neck.



K10013

## Full & Half button

A polished and comfortable garment to keep you warm in windy weather.



K10010

## Full-zip

Super versatile and easy to take on and off.

# Customise your knitwear

Choose from a range of colours and two weights. Then make it truly your own with options such as type of closure, armhole style, sleeve style, optional chest pocket, side pockets, vents, contrast details and, of course, your own personal monogram.

Here are some of our favourite combinations — pictured here in single-ply yarn, the perfect weight for spring and summer.

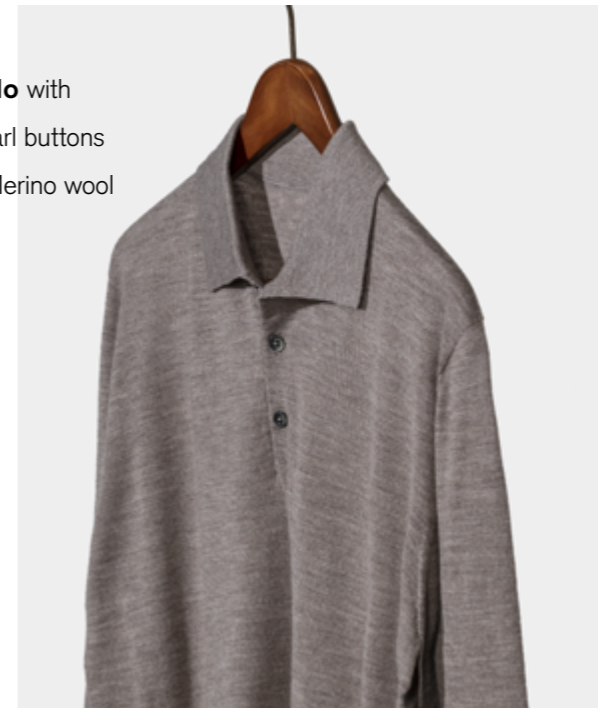


**Short-sleeved polo** with white, mother-of-pearl buttons and two side vents in off-white Merino wool (K10013).



**Short-sleeved polo** without buttons in sand mélangé Merino wool. With two side vents and a patch chest pocket (K10014).

**Long-sleeved polo** with grey, mother-of-pearl buttons in taupe mélangé Merino wool (K10016).





**Short-sleeved crew neck** with a wide neckline in navy blue Merino wool (K10006).

**Short-sleeved crew neck** with two side vents and a patch chest pocket. In storm blue mélange Merino wool (K10004).



**Long-sleeved crew neck** with a patch chest pocket and contrasting 'line edges' in light grey. In slate green mélange Merino wool (K10027).

**Long-sleeved crew neck** in medium grey Merino wool. With a raglan armhole and contrasting 'line edges' in taupe (K10010).



## Full-zip variations

| 27 / 142

| 28 / 142



**Long-sleeved, full-zip mock neck** with slanted patch side pockets in light grey mélangé Merino wool (K10012).



**Short-sleeved, full-zip mock neck** in navy blue Merino wool (K10006).

**Sleeveless, full-zip mock neck** in taupe mélangé Merino wool (K10016).

**Long-sleeved, half-zip mock neck** with slanted patch side pockets in sand mélangé Merino wool (K10014). With contrasting 'line edges' in light grey (K10012).



**Long-sleeved, full-zip** in medium grey Merino wool (K10010).



**Short-sleeved, full-zip hoodie** in midnight blue Merino wool (K10007).



**Long-sleeved, full-zip hoodie** with slanted patch side pockets in light grey mélange Merino wool (K10012).



**Sleeveless, full-zip hoodie** in indigo mélange Merino wool. With slanted patch side pockets and contrasting 'line edges' in light grey (K10005).



**New closure: hoodie with drawstrings** in midnight blue Merino wool (K10006).





**Long-sleeved 'full-button'** in camel mélangé Merino wool. With patch side pockets and horn buttons in chestnut brown (K10019).



Finish the look with your own personal monogram.



**Long-sleeved 'full-button'** in storm grey mélangé Merino wool (K10011). With a patch chest pocket and urea buttons in mixed grey.



**Sleeveless 'full-button'** in sand mélangé Merino wool (K10014). With patch side pockets and horn buttons in chestnut brown.

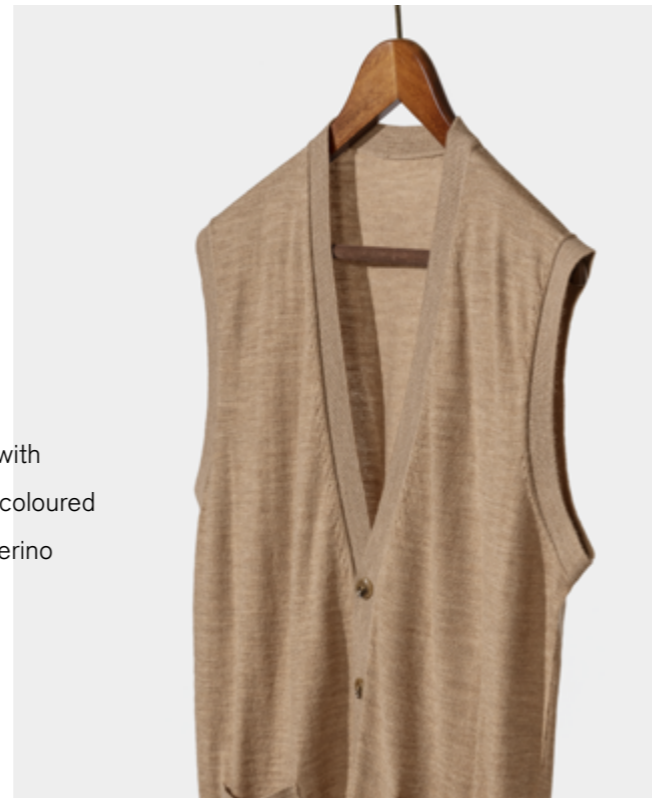




**Long-sleeved, 5-button cardigan** with patch side pockets and beige-brown urea buttons. In medium grey mélange Merino wool (K10010).



**Sleeveless, 5-button cardigan** with beige urea buttons and contrasting, sand-coloured 'line edges'. In off-white Merino wool (K10013).



**Sleeveless, 5-button cardigan** with patch side pockets and cinnamon-coloured urea buttons. In camel mélange Merino wool (K10019).

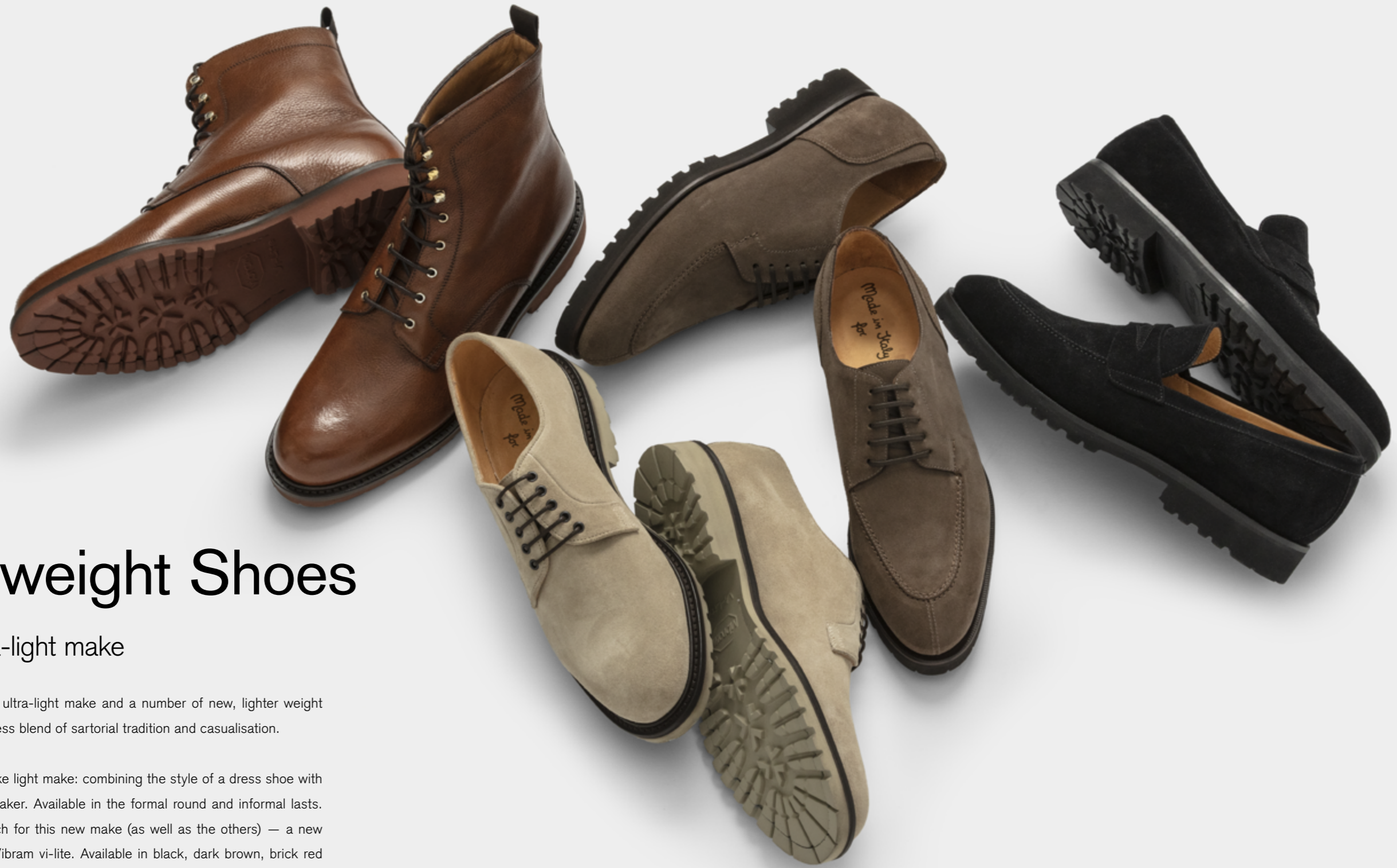




# Shoes

Lightweight & comfortable

As tailoring evolves to include a range of lighter, more comfortable alternatives, we're thrilled to announce (y)our shoes can now do the same!



# Lightweight Shoes

## A new ultra-light make

Introducing one new ultra-light make and a number of new, lighter weight options. For a seamless blend of sartorial tradition and casualisation.

First, (y)our new Blake light make: combining the style of a dress shoe with the comfort of a sneaker. Available in the formal round and informal lasts. Plus — a great match for this new make (as well as the others) — a new ultra-light sole: the Vibram vi-lite. Available in black, dark brown, brick red and sand, this new sole will replace the Vibram Gumlite.

Combine these new options with our summer suede for the ultimate warm-weather shoe, now available in every type of last. Also available in a new (light or dark) camouflage print, the freshest addition to (y)our summer suede collection: for a supple shoe with a twist.

We recommend ordering samples to allow your customers to experience the mix of comfort and a formal style first-hand.

GRA05, SUS06, SDE06, SDE01

# Greater comfort, better performance

## Sneaker improvements

As you know, we're always looking for opportunities to improve our collections and products. With spring and summer on the horizon, we examined every detail of (y)our sneakers to find ways to provide even more comfort and better performance. We're proud of the result and hope you will be, too!



Starting in March, (y)our sneaker soles will provide more support, encouraging a more active posture and making them even easier to wear for long stretches of time.

Softer interlinings provide even more comfort.

Improved low-top back: slightly higher for a better fit around the heel.



**Penny sneaker** SUSP06

**Low-top sneaker** SUSP05

**Double monk sneaker** SUS08

**Slip-on sneaker** SUSC01

**Low-top sneaker** SUSC02

# Sneakers

Our five favourites for spring and summer

Sneakers are no longer worn only on weekends or to the gym. Nowadays, they can be paired with just about anything and the choices are nearly endless.

# Technical Coats

New season, new colours



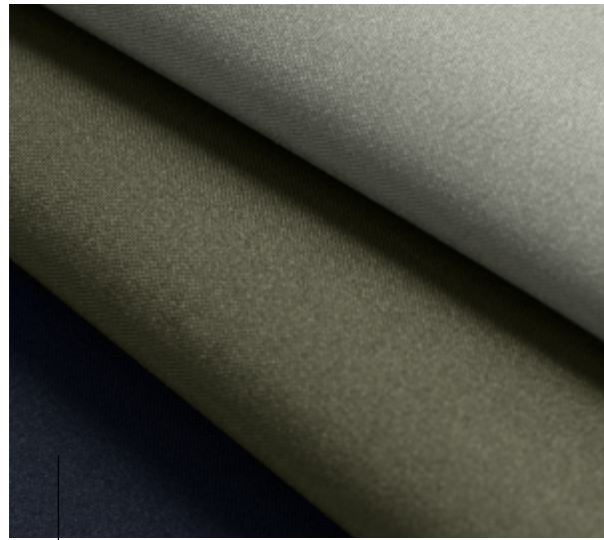
To give your customers more choice for spring and the cooler, damp summer days and nights, we're adding more colours and one new quality to your 365 collection. All from the renowned outerwear fabric supplier Olmetex.



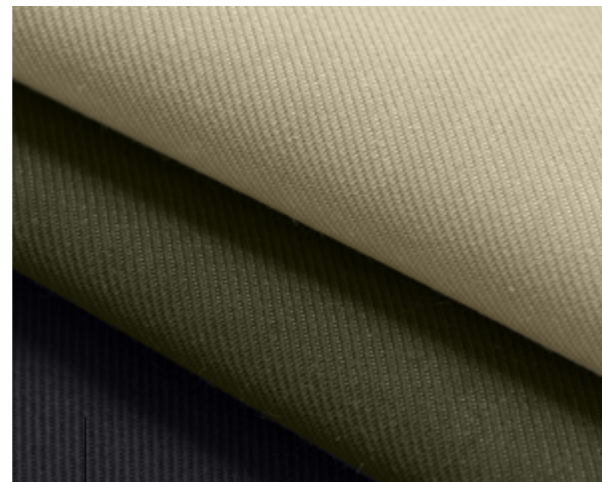
# Seasonal highlights

*Ready for summer rains*

Introducing a total of six new colour options: adding navy, frost grey and grape leaf to the 3-layer technical quality we introduced last season — and midnight blue, olive and khaki to your choice of water-repellent cotton blends.



OC0101, OC0102 & OC0103

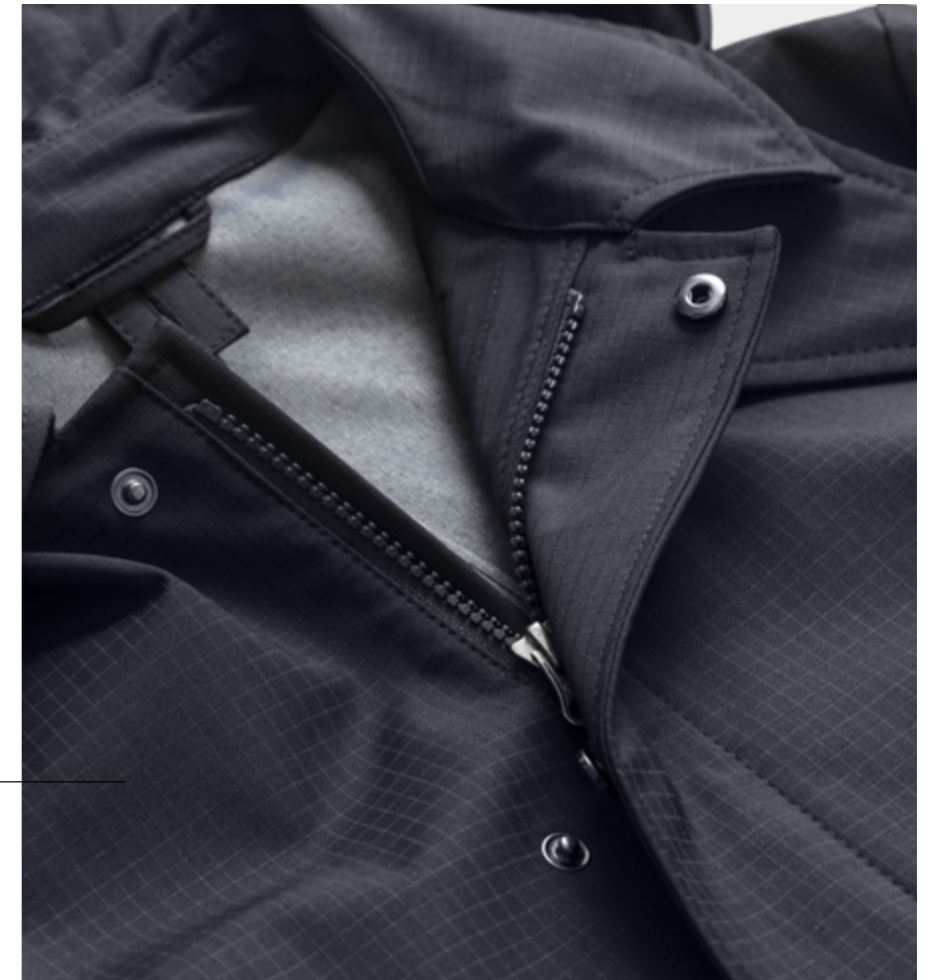


OC0097, OC0098 & OC0099



Plus, one brand-new 3-layer technical fabric, to not only keep you warm and dry (windproof and water repellent), but also cool (breathable!).

OC0100





# The Pants Guide

Jeans, 5-pockets and chinos have become everyday staples. That's why, in 2018, we started (y)our very own made-to-measure jeans and 5-pockets collection and, in 2019, your chinos. Since then, we've kept on adding more models and fabrics — to give you more options to create your own casual total look. Read on for an overview of all your current models, fabrics and design options.





### Raw selvedge jeans

Unwashed and untreated, raw denim jeans have a deep indigo colour and are initially fairly stiff (before the wearer has worn them in). Woven on a shuttle loom, which naturally produces a tightly bound, finished selvedge edge used on the outseam of each pant leg, their dark blue colour makes them an easy-to-pair all-rounder.

DEN004



### Washed jeans

Pre-washed to achieve the look and comfort of jeans that have been worn for years — from the first time you put them on. In (y)our case, with a small percentage of elastane for greater flexibility and comfort.

WAS014



### Garment-dyed twill 5-pockets

Available in your choice of lightweight fine twill — ideal for spring and summer — and a slightly heavier, four-season broken twill. Both wearable all year round and particularly pleasant in the warmer months.

COG005



### Stretch cotton 5-pockets

A comfortable year-round option made from durable, soft cotton twill with added stretch.

COL008



## Smart chino

Less formal than your dress chino, but not as casual as the 5-pocket: for a happy medium.

COG013



## Dress chino

Suitable for the office and your other more formal looks.

**New design option: pressed crease**

For an extra touch of sharpness and sophistication.

COG012



## Drawstring chino

Your classic chino in a more relaxed style. Featuring a drawstring waistband with elastic on each side.

COL024



## Cargo chino

Add practical cargo pockets to stow your belongings. For a well-dressed utility look.

COG006

# Seasonal Jacket Collection

Staying cool while looking sharp — that's what the warmer months ahead are all about. Whether for a meeting, special event or leisure, the key to the perfect summer wardrobe lies in choosing lightweight and breathable fabrics. Luckily, our new SS22 jacket collection is here to provide you with 50 effortless, warm-weather options in hues of blue and neutral tones.



# Seasonal highlights

*Refined yet casual*

**Denim look jacket:** one soft 'denim look' made from a more sustainable blend of cotton, hemp and lyocell.

| 55 / 142

8787



| 56 / 142



**Knit jackets:** two comfortable stretch knits — one 100% cotton and one cotton blend. For a refined-yet-casual appearance while helping you beat the heat.

8797 & 8798

# Seasonal highlights

| 57 / 142

## *Pure linen & linen blends*

**Pure linen:** The most popular and the most classic material for summer? Pure linen. Due to their textured weaves, moisture-regulating properties and strong, breathable fibres, these fabrics are both robust and a pleasure to wear.

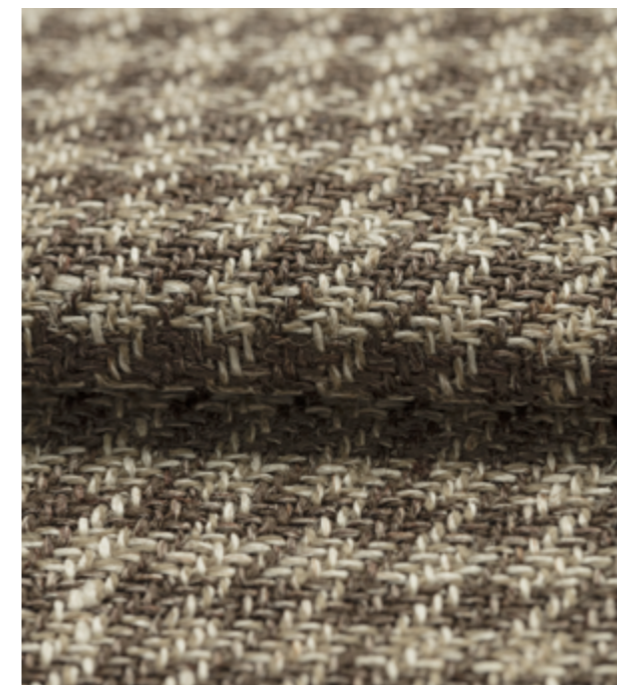
8802, 8765 & 8759



**Linen blends:** perfect for informal jackets, with a nice drape and soft touch. For a look that's both casual and refined.



8804, 8799, 8772 & 8760



8767

**Wool linen blend:** one breathable houndstooth in a compact, summer-ready weight with a slight sheen.



# Seasonal highlights

*Rusty*

**Cotton-linen blend:** a classic mix of summer fibres in two colours of a unique herringbone weave. Breathable with a touch of stretch.

| 59 / 142



8776 & 8779



| 60 / 142



8774 & 8780



**Wool, silk and linen:** soft, supple and sure to be one of the summer's most elegant, lightweight blends.

# Seasonal highlights

| 61 / 142

*Soft, vegan, faux-velour leather*

For spring and the breezier summer nights, opt for (y)our soft, vegan, faux-velour leather — similar to suede, with a visually compelling look and a satisfying drape.



8775



8801



8801, 8775 & 8771



# Seasonal highlights

## *Water-repellent peach skins*

Ready for a spring shower at a moment's notice? No problem, that's the genius of these four water-repellent peach skin fabrics in elegant twill. A great match for any outfit and perfect for informal jackets.

8739, 8706, 8697 & 8687



# Seasonal highlights

## Textured

For your more formal affairs, there's nothing better than a summer blend of wool, silk and linen with a crisp touch: combining the coolness of linen, the wrinkle resistance of wool and the lustre of silk.

| 65 / 142



8793 & 8784



| 66 / 142

8790



**Wool, silk and linen:** a soft summer blend with added stretch for comfort. In a visually appealing windowpane basketweave and six versatile colours.

8790, 8781 & 8769



# Seasonal highlights

*Ultimate summer blends*

**Wool, silk and linen:** an alluring array of summer textures, weaves, patterns and colours. Equally suitable for the office, an afternoon boat ride or a special occasion.



8777, 8766 & 8764



8786 & 8763

# Essentials for summer

Knowing how to stay well dressed when temperatures rise is a skill — and a tricky one for some men to master. Help your customers enjoy the warmer days while staying cool, stylish *and* sartorial with the following suggestions.



# Coats

For many of us, summer doesn't always translate to dry and sunny. If unpredictable summer weather is the norm where you live, then a lightweight technical coat is essential — to keep you dry without overheating.

OC0102



71 / 142

| 72 / 142



## Informal jackets

Layers are key to a smooth transition between the hot sun and a chilly, air-conditioned environment or cooler evening. Opt for looser, unconstructed informal jackets: light, comfortable and suitable for nearly every occasion.

8759



## Open-front knitwear

A smart look over any outfit without the bulk of a weighty jacket or coat.

K10006, K10012 & K10019



## Shirts

Breeze through the warmer months with these summer-ready fibres.

SH00258



## Drawstring trousers

Smart-casual and comfy drawstring trousers in soft linen blends and sartorial stretch fabrics — for a cool feel, elegant look and relaxed vibe.

5624, 5605 & 5657



## Polos

A short-sleeved polo is one of the most classic pieces in a man's summer wardrobe. Wear it casually with jeans or in place of a button-up under a more relaxed suit.

K10013, SH00176 & SH00180



## Jeans & 5-pockets

Swap your dark indigo jeans for light, summer-ready washes with stretch.

COL001 & WAS014



# Chinos

Appropriate on almost every occasion, the garment-dyed chino in breathable fine twill is especially suitable for spring and summer. With a slightly soft, crisp feel and a touch of stretch — perfect for a comfortable slim fit or a slightly wider summer look.

COG018, COG012 & COG013



# Shoes

**Slip-on sneakers:** just a slide away from stepping off to the pool or onto a beachside boardwalk.

**Lightweight penny loafers:** dress them up with a suit or down with everything from knitwear and jeans to chinos and a polo shirt.

SDE02 & SUS08



# What to wear to a summer wedding?

## *Our style guide*

With peak wedding season close at hand, a new trove of wedding attire is fast approaching. Sure, 'the rules' are usually clear enough when your client is part of the wedding party, but what about when he's a guest?

Before selecting a wedding outfit, the most important thing to consider is, of course, the dress code — was it mentioned on the invitation? Black tie is probably the most straightforward, but 'black-tie optional' or casual might be a bit more difficult. Use this guide to help your customers find clarity and summer inspiration for the most widely used wedding dress codes (equally applicable to other events!).



## Morning suit

The most formal dress code of all, morning suit requires a morning coat with a white shirt, waistcoat, (bow) tie, and formal footwear like Oxfords or derby shoes. Some may choose to take it a step further by adding grey gloves and a black or grey top hat.

Morning coat: EVE025  
Waistcoat: EVE017  
Shirt: SH00102  
Tie: TWD002  
Pocket square: SH00102  
Trousers: EVE020  
Shoes: CAL01



## Black tie

Usually implying an evening event, the tuxedo is standard attire when it comes to black tie, combined with a white shirt, black bow tie and black patent leather Oxford shoes. For summer, a white dinner jacket with black tuxedo trousers are also common.

1 button jacket: TUX003  
Shirt: SH00102  
Bow tie: TSAT003  
Pocket square: SH00102  
Trousers: TUX003  
Shoes: PAT01



## Black tie optional or formal

The same as black tie, with the option of being a bit less formal. Wear a full tuxedo suit or opt for a formal suit with a white shirt and tie.

2 button jacket: WWM004  
Shirt: SH00102  
Tie: TS540  
Pocket square: PSILK028  
Trousers: WWM004  
Shoes: POA05



## Semi-formal

Offering the most flexibility in terms of comfort, semi-formal can include a classic suit and tie or even just a shirt and trousers, as long as the whole isn't overly casual. Choose lighter colours and fabrics for summer, especially for daytime weddings.

2 button jacket: WEDS020  
Shirt: SH00110  
Tie: TKNIT008  
Pocket square: SH00110  
Trousers: WEDS020  
Shoes: SDE06



## Destination

Tropical or destination weddings are usually warm affairs. Stick to breathable suit fabrics like cotton or linen in lighter colours or, if temperatures are likely to get extremely high, ditch the jacket and wear a linen button-up shirt, Bermudas and loafers instead.

2.5 button informal jacket: 8759  
Shirt: SH00162  
Pocket square: PLIN001  
Bermuda: COG013  
Shoes: SDE06



## Festive

A relatively new dress code, 'festive' gives you permission to have fun and play around with your look. For example, in a pastel suit with characteristic accessories, like a pocket square with a print or a unique tie.

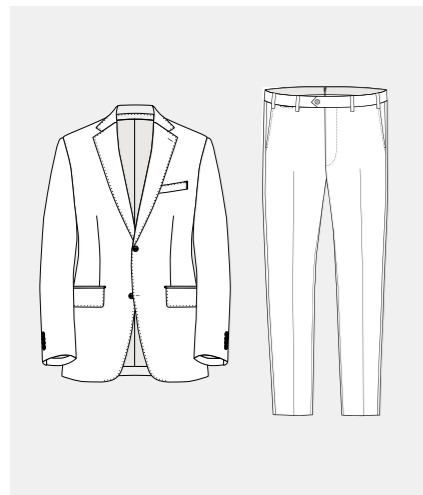
2 button jacket: EVE041  
Shirt: SH00104  
Tie: TWD001  
Pocket square: PS537  
Trousers: EVE041  
Shoes: POA06

# Create your summer wedding suit

Know the dress code? Excellent, then you're ready to help your client create his own custom summer wedding ensemble.

## Choose the model

For example: a two-piece or three-piece suit, tuxedo, traditional morning coat, short morning jacket, or even a Southeast-Asian inspired Nehru jacket with trousers. There's something for every dress code.



Two-piece suit



Three-piece suit



Morning Coat



Tuxedo



Nehru jacket



Short morning jacket

## Select the fabric

Choose a fabric from our ceremonial wear collection, e.g.: Solaro tropicals for a smooth, lightweight and breathable four-season look, a woollen faille weave in pastel or neutral tones for a colourful twist, or a pure wool sablé for your more formal and evening affairs.



EVE035 & EVE034



Or select from any of our SS22 collections — including pure linen, linen blends and Solaros — to temper the sun for a tropical (destination) wedding.

5612, 5608 & 5619

## Customise the details

| 89 / 142

From the lapels and jacket lining to the type of pockets and monograms: it's all up to you.

### Choose your lapel

The three basic types for wedding are the notch lapel, peak lapel and shawl lapel. Available in various widths.

EVE034 & WEDS021



### Add some fun with a fancy lining

They will be your wedding suit's custom secret, ensuring it's just as stylish on the inside as it is outside.

EVE039 & Fancy 351



Fancy 352 & Fancy 404



### Make it personal with a monogram

by adding your initials or the special date.

EVE033



### Countless button options

Mother of pearl buttons are a luxurious classic detail. Made from the inner layer of pearl oysters.

EVE038

Buttons 9, 13 14, 15 & 16





EVE034

# Complete the look

A charming suit or jacket is a good start, but your outfit isn't complete without an equally smart combination of shirt, shoes and accessories.

What goes with what? The following pages should help trigger your imagination.



EVE035



In the expected-bestselling colour of green, an elegant darker suit in a summer wool-linen blend with stretch. Particularly favourable for tropical destinations — or any event in the height of summer — thanks to its highly breathable open weave.

With a shirt in white cotton poplin, derby plain-tip shoes in polished black antique leather, and a faux-solid tie in silver silk.



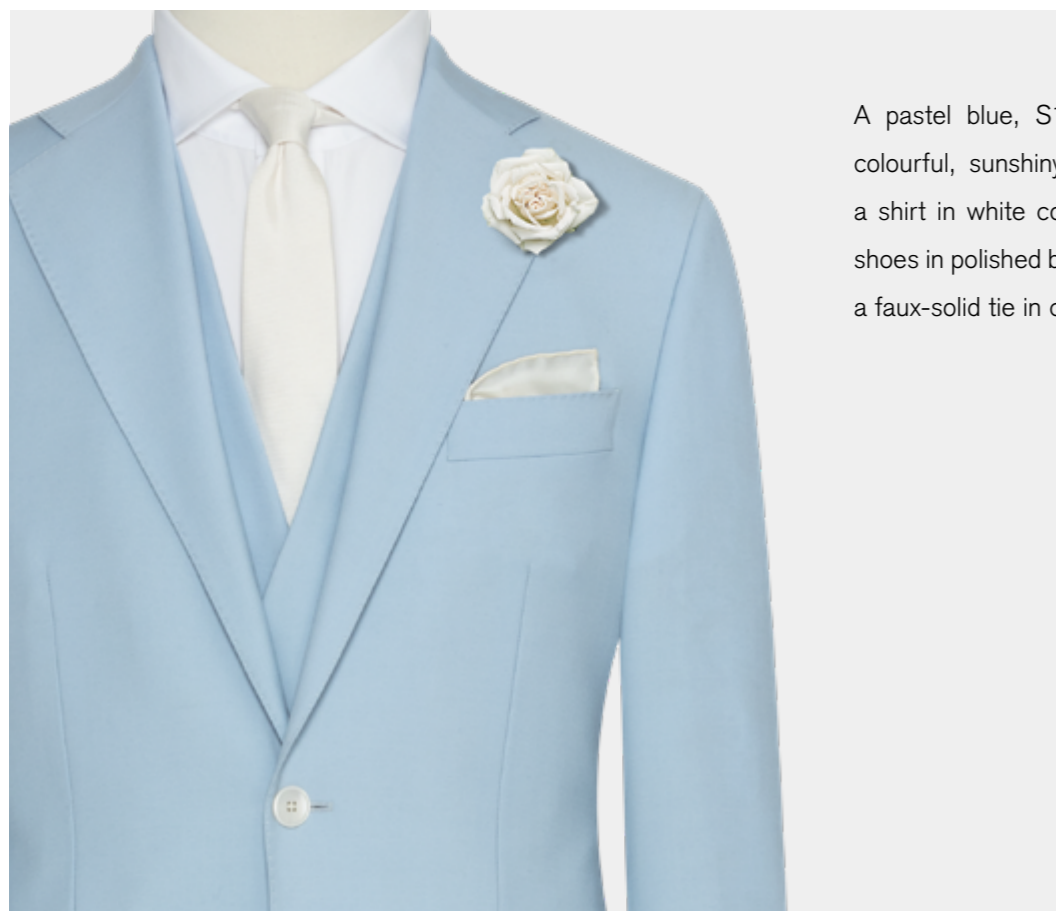
A seasonal S130 Solaro herringbone suit with natural two-way stretch. In the eye-catching colour of spruce green, perfect for weddings with festive or tropical destination dress codes. With a matching waistcoat, a shirt in white cotton poplin, Oxford plain-tip shoes in polished black antique calf leather, and a matching tie and pocket square in an ivory-coloured, satin wool blend.

Suit: 5620  
Waistcoat: EVE013  
Shirt: SH00102  
Tie: TWD001  
Pocket square: EVE013  
Shoes: POA01



Suit: 5619  
Shirt: SH00102  
Tie: TWD002  
Pocket square: SH00102  
Shoes: POA01





A pastel blue, S100 wool faille suit: for a colourful, sunshiny twist. Pictured here with a shirt in white cotton poplin, derby plain-tip shoes in polished blue antique calf leather, and a faux-solid tie in champagne silk.



An airy, light-coloured wool suit in a brown-white fancy weave — a look with summer written all over it. Finished with a matching shirt and pocket square in white cotton dobby, penny loafers in taupe suede, and a faux-solid tie in champagne silk.

Suit: WEDS022  
Shirt: SH00110  
Tie: TWD001  
Pocket square: SH00110  
Shoes: SDE06



Suit: EVE039  
Shirt: SH00102  
Tie: TWD001  
Pocket square: PSILK028  
Waistcoat: EVE039  
Shoes: POA05

# Ivory tuxedo details

## Satin and ottoman fabrics

For your all-white looks, we've extended our collection of satin and ottoman fabrics to include a fresh, new ivory colour. Be it for a bow tie, waistcoat and/or your tuxedo details (lapels, jet pockets and buttons), the result is sure to be a perfect pairing: slightly daring, thoroughly festive and 100% summer proof.



1 button jacket: EVE012  
Shirt: SH00102

Waistcoat: EVE012  
Bow tie: TSAT005

Trousers: TUX001  
Shoes: PAT01



An off-white bamboo waistcoat with (y)our new ivory-coloured satin buttons and jet pockets. Paired with a lightweight shirt in white cotton poplin.

Waistcoat: EVE012  
Shirt: SH00102

# Seasonal Suit Collection

While formal suits and ties are no longer the universal standard for work attire, there's still no excuse for sloppy dressing. A smart-casual style is meant to be elegant, but also comfortable and easy to adapt to more informal occasions. Moreover, the summer heat offers its own incentive (and opportunities) to dress accordingly.

That's why we've curated a collection of 64 cool, office-ready suit fabrics, many with a relaxed, almost gym-ready feel.

Specifically for business, we've also expanded (y)our S130 doppio collection to include new colours, in the same fine, double-twisted threads you've come to depend on: for sharp and durable suits with amazing drapability.

Read on to discover our favourites...



# Seasonal highlights

| 101 / 142

## *Summer stretch blends*

**Wool and linen:** breathable, summer-stretch blends of wool and linen with an open weave. Cool and collected, for your more informal occasions.



5648, 5612 & 5608



5656, 5648 & 5608

# Seasonal highlights

| 103 / 142

*Life of the party*

**S130 wool:** comfortable, soft and ultra-fine S130 wool 'iridescent Solaros' with natural two-way stretch. To shine at a party or on any festive occasion.



5651 & 5636



5620, 5613 & 5607

# Seasonal highlights

| 105 / 142

*Casual summer elegance*

**Wool and linen blend:** a summer favourite in an understated, informal herringbone with added stretch.



5658, 5610 & 5625



**Informal linen blend:** a characteristic glencheck in a breathable, laid-back linen blend. An absolute asset on hot summer days.

5611

# Seasonal highlights

| 107 / 142

*Casual & breathable*

**Heavy 100% linen:** the cool breathability of linen in a more hefty, casual weight. With a subtly striped texture for extra dimension.



5654 & 5624

5646



**Wool and lyocell:** an easy and supple blend with stretch.

# Seasonal highlights

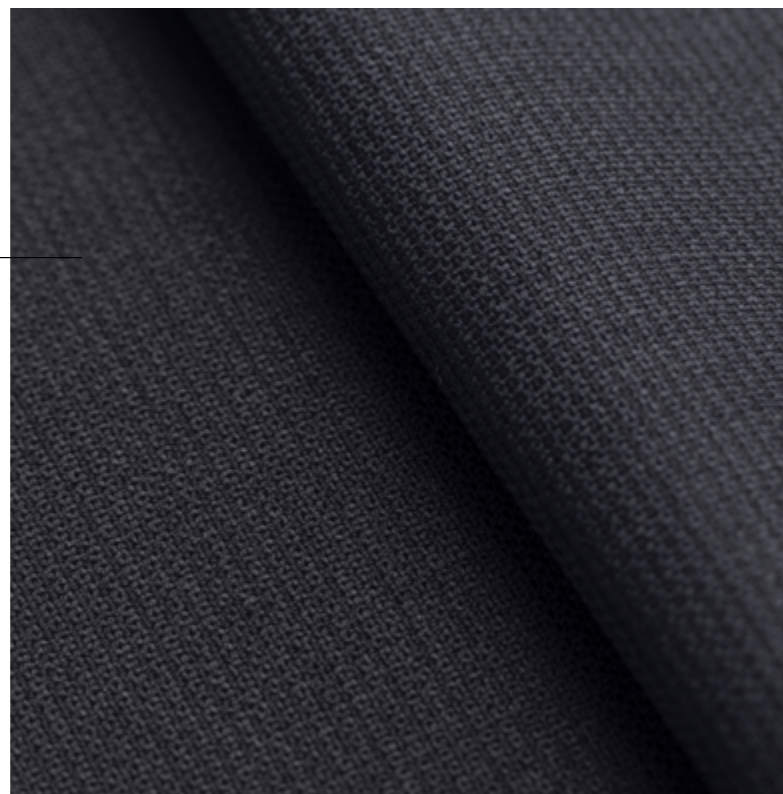
| 109 / 142

*Extra stretch*

**High-stretch wool:** breathable, high-stretch wool suits with a jersey feel and excellent crease resistance. For a perfect transition from office to party.



5665 & 5662



| 110 / 142

5650, 5649 & 5639



**Open weave wool:** lightweight yarns, double twisted for superior crease resistance.

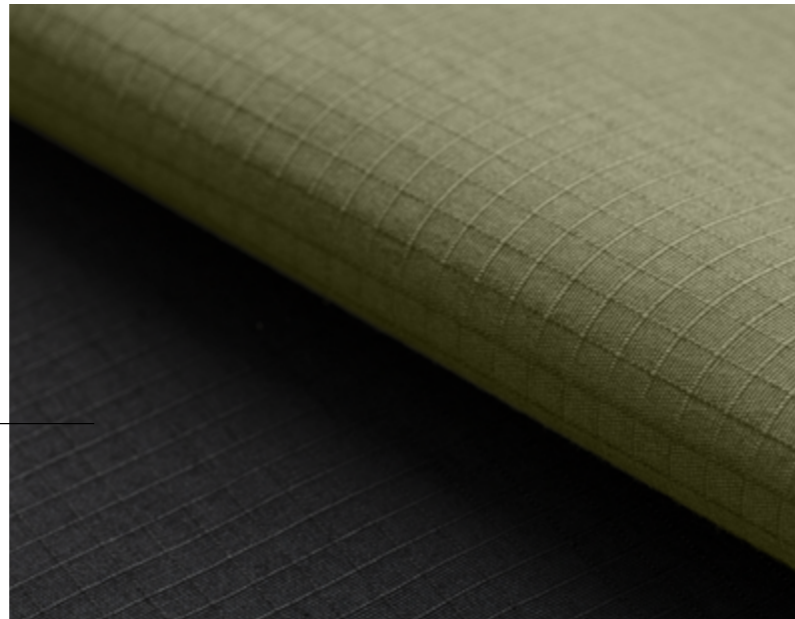


# Seasonal highlights

*Casual suits in cotton and linen*

**Casual cotton:** with a crisp touch and added stretch.

5663 & 5616



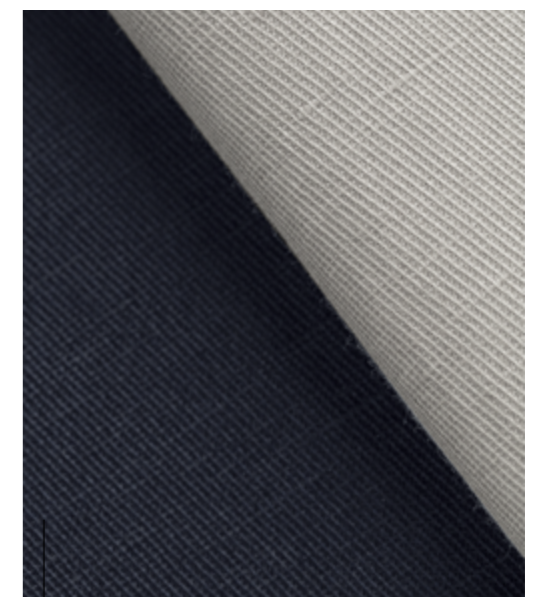
**Comfortable cotton-linen:** for sturdy-yet-soft suits with a light, clean feel and 2% elastane for extra freedom of movement.



5617

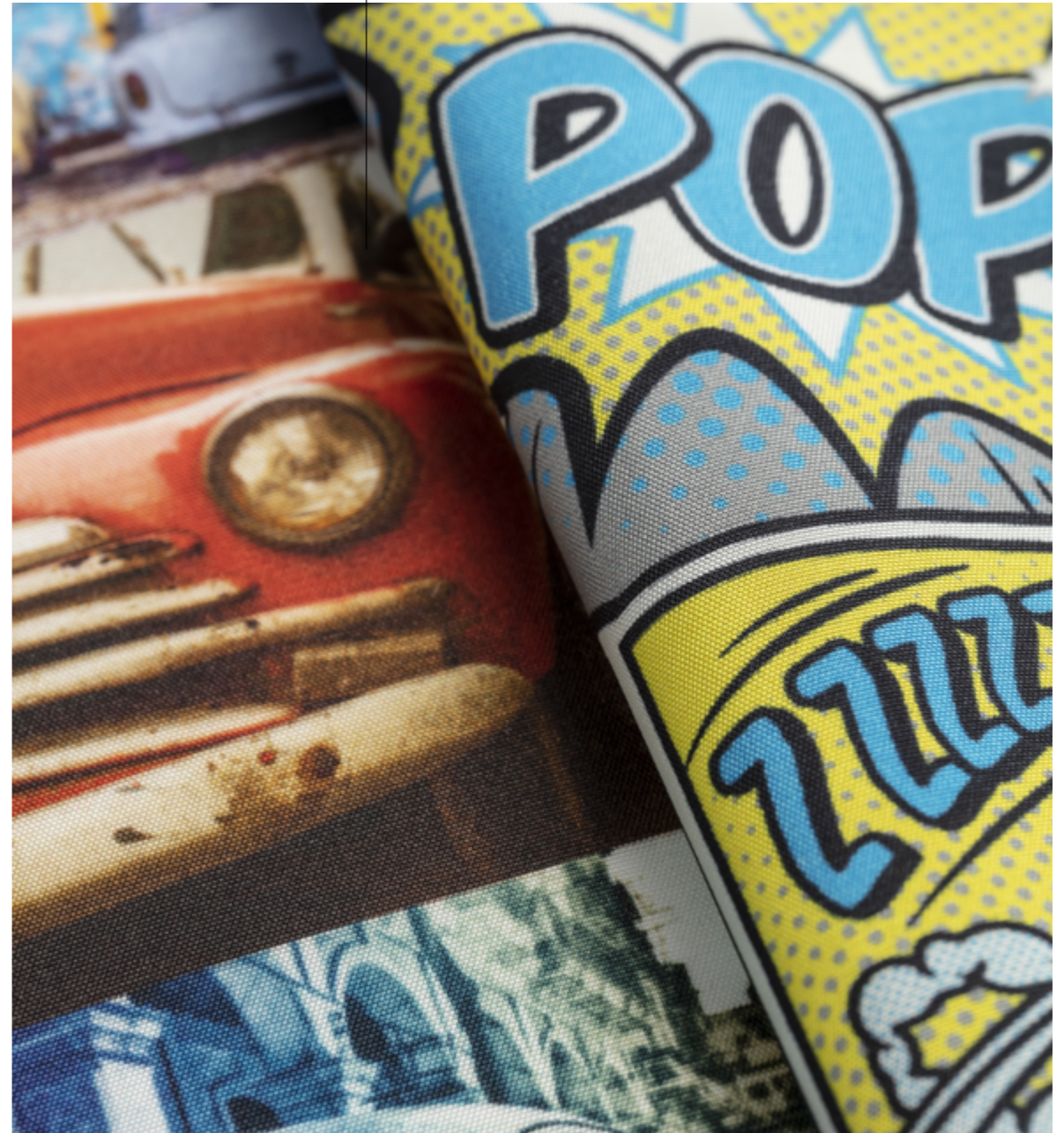


Lightweight and refreshing. With added stretch for a modern twist.



5660 & 5605

Fancy 424 & Fancy 423



## Fancy linings

Introducing five seasonal prints to (y)our fancy linings collection, for a healthy spoonful of summer vibes: Cuban cars, two leaf prints (dark blue jungle leaves and watercolour eucalyptus) and peacocks.

Plus, for the comic strip fans, a new pop-art design.

# Ties & Pocket Squares

With spring and summer right around the corner, we sought inspiration for this season's tie and pocket square collection in the great outdoors. The result? A beautiful colour palette of blues, greens, browns, some sandy tones, and a touch of grey and pale pink.

For pocket squares, we mixed these tones with plenty of white to give an absolute summer boost to your outfit: in nine double-faced silk-cotton blends and three printed linens. Featuring a variety of patterns, from simplistic geo flowers and an open diamond to elaborate florals, full-on tiles and paisleys.



PS542, PS541 & PS539



TS707, TS702, TS687 & TS699

Likewise, we're introducing 22 new seasonal ties in classic wool, linen and silk, including some surprising grenadine weaves, and a selection of patterns and prints ranging from subtle (e.g., in polka dots or a tonal micro flower) to more outspoken (e.g., in contrasting stripes or a medallion print).

### Two new tie design options

Whether used to achieve a certain look or to better balance your customer's proportions, your tie design options now include one extra width (9 cm) and one extra length (175 cm).

# The One-Piece Collar Shirt

Looking for a fresh take on your classic shirt? Look no further than the one-piece collar. Featuring simplified seams between the collar and placket, for a distinguished neckline designed to stay up all day. To achieve the intended look and function, the one-piece collar shirt requires a skilled pattern cutter, making it an almost exclusively custom-made item. Now available in any and all of our 365 and seasonal shirt fabrics!

With a number of nicknames, including the California collar and the Cooper collar (named after the mid-20th century classic Hollywood actor Gary Cooper), the one-piece collar rolls slightly open and is generally worn without a tie for an instant smart-casual look.

Tip for the warmer season: have your one-piece collar shirt made with short sleeves in linen or a cotton-linen blend for the ideal summer shirt — contemporary, lightweight and breathable.

## **New design option: snap buttons**

A dependable addition to your casual 'tool belt', and a great match for (among others) denim, chambray and distinctive checks.



SH00169



SH00162

SH00168  
SH00162 & SH00163

# Seasonal Shirts

Don't sweat, it's summer! With (y)our newest seasonal shirt additions, you'll stay dry on even the hottest of days.

**Design option improvements: new sartorial fusing for all your shirt collars and cuffs (soft, standard and hard)**

From January onwards, all shirt fusings will be replaced with a new, more refined quality: more voluminous and supple, with a more sartorial hand feel. Because the devil's in the details and we're always looking for ways to improve.



# Business shirts

| 121 / 142

Six new 365-seasonal wrinkle-free twills in a mix of stripes and prints. Made from a blend of organic cotton and lyocell.



SH00232

SH00236 & SH00237



# Ceremonial shirts

| 122 / 142

Two new 365 formal cotton shirt fabrics. Perfect for summer weddings.



SH00230

SH00231

# Smart casual shirts

123 / 142

One new 365 heavy-yet-breathable quality of soft denim. Dyed with real indigo, which fades and becomes more characteristic over time.

SH00241



Three new seasonal striking prints for your poplin informal shirts. Ultralightweight with a soft touch.

SHS0029 & SHS0030



Three new 365-seasonal colours for your cotton Oxford informal shirts — in black, dark olive and midnight blue.

SH00239, SH00238 & SH00240



Three new 365-seasonal colours in casual cotton-linen blends: airy, effortless and cool.

SHS0026 & SHS0028



SH00243, SH00244 & SH00245



SH00242

## Knit shirts

One new 365 pattern of (y)our high-stretch performance knit, plus three new interlock knit shirtings with a pleasant drape and natural stretch.



# Casual shirts



Four new 365 soft-cotton twills —  
for informal (yet classy) summer shirts.

SH00248, SH00247, SH00249 & SH00246

Three new 365 casual, heavyweight  
shirtings in breathable blends of cot-  
ton and linen.

SH00250, SH00252 & SH00251



Ten new shirt fabrics in pure, 100%  
linen: breezy and cool with a light,  
crisp touch. In four seasonal glenchecks  
and six 365 solid colours.

SH00260, SH00262 & SH00258



# Ready-to-wear order system

Sometimes, customers need a new outfit right away, often for a special occasion or event. With our ready-to-wear order system, you don't need to purchase your ready-made collection (or tie up your capital in inventory for) months in advance: you're free to order whatever you need, whenever you want.

From informal jackets, jeans and chinos to knitwear, casual shirts and everything in between, you can now create your own ready-made collections 365 days a year, 24 hours a day, using any of our products — and we'll deliver within four to six weeks.

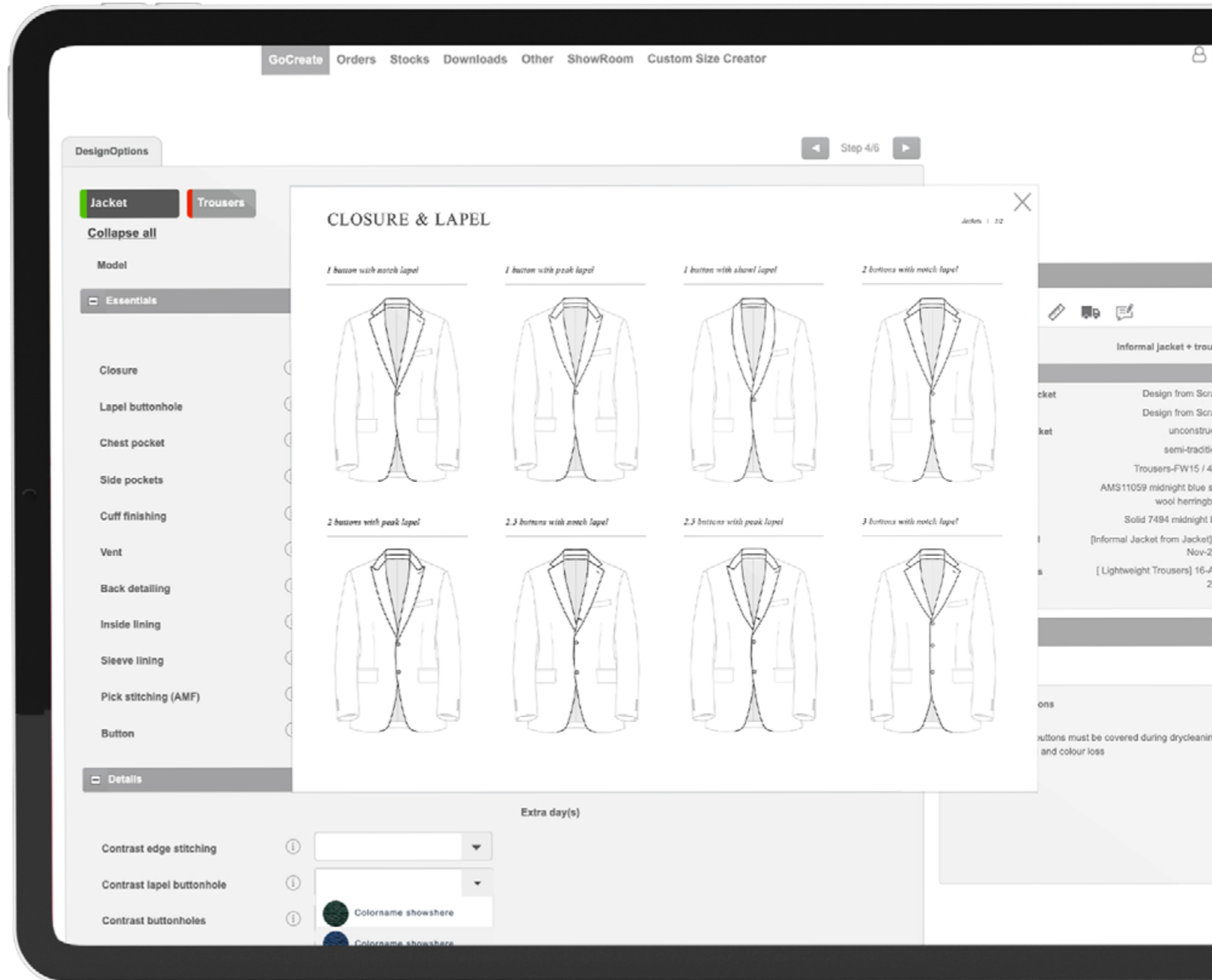
To make it extra easy for you to create your own seasonal ready-made series, we've already ordered extra meters of, in our humble option, this season's very best suit ( $n = 11$ ) and jacket ( $n = 16$ ) fabrics. For everything from business to ceremonial wear, formal to informal/utility jackets — including four of last season's peach-skin fabrics, back by popular demand. For an overview of these 27 (expected) bestsellers, check your inbox for a November email from us with subject line 'Ready-made for SS22' or reach out to your custom consultant, who will be happy to help.

Head to the ready-made module in GoCreate to start curating your own ready-made series today!



# New in GoCreate

For extra ease and clarity, your order-creation pages now include visuals of each design option: click the info buttons to view the illustrations.





# (Y)our more sustainable picks for summer

For this season's suit, jacket and coat collections, approximately 23% of the total material volume we purchased is rated 'more sustainable' according to our in-house standard. (Curious about this standard? Ask and we'll gladly share the details!) For (y)our seasonal shirts, that volume is approximately 65%.

Want to help reduce your environmental footprint this summer? Consider these more sustainable options, which are just a few of the many.



## Safari jacket in pure linen

Linen, a natural fibre, is made from the resilient flax plant, which can grow in poor, even polluted soil. Perhaps even more importantly, the cultivation of flax requires considerably less resources than cotton (e.g., in terms of water, energy and pesticides).



## Wool-linen blend suit

Made partially from eco-friendly linen and partially from recycled polyester — blended with wool, a natural fibre. The result? Less chemicals and less waste.

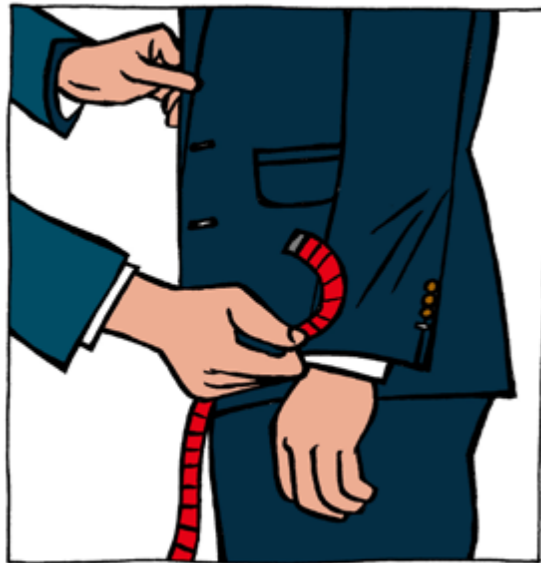


## Organic cotton shirts

Grown without the use of chemicals, using up to 90% less water compared to conventional cotton.

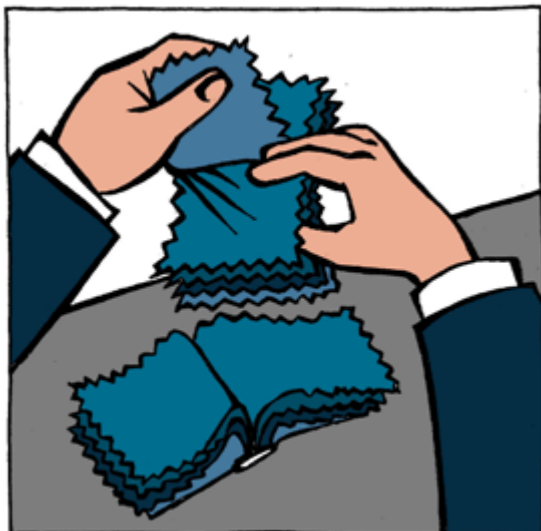
# What else can you do?

Join us on our journey towards a more planet-friendly future with these six easy tips for minimising your environmental and social impact:



## Buy custom-made garments

Purchase only what you and your customers need. Avoiding overproduction is one of the best ways to minimise waste.



## Choose the right materials

Natural or lower-impact fabrics result in less pollution.

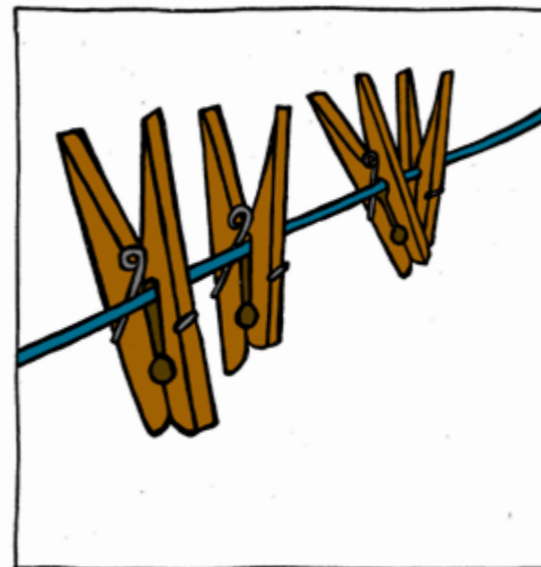


## Wash less, air more

Many garments can simply be aired between wearings. By washing your clothes only when necessary, you not only conserve water and save time and money, you also help maximise the lifespan of your garment: washing less typically slows down the process of ageing and fading.

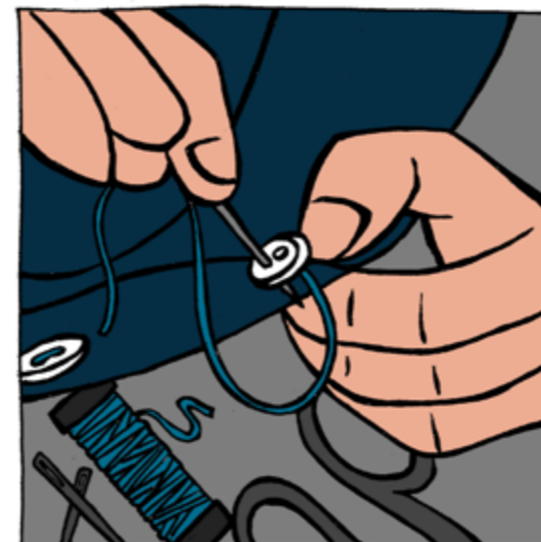
### Wash on cool

When you need to wash, wash on low temperatures (30 degrees or less) with only a moderate amount of mild detergent (preferably non-toxic, biodegradable or eco-friendly). Some detergents actually work better at lower temperatures.



## Skip the dryer

Air drying not only saves energy, it also helps your clothes last longer (tumble drying is harsh and contributes to colour fading). Remember: when washing jeans or knitwear, always allow them to dry on a flat surface and away from direct sunlight.



## Repair

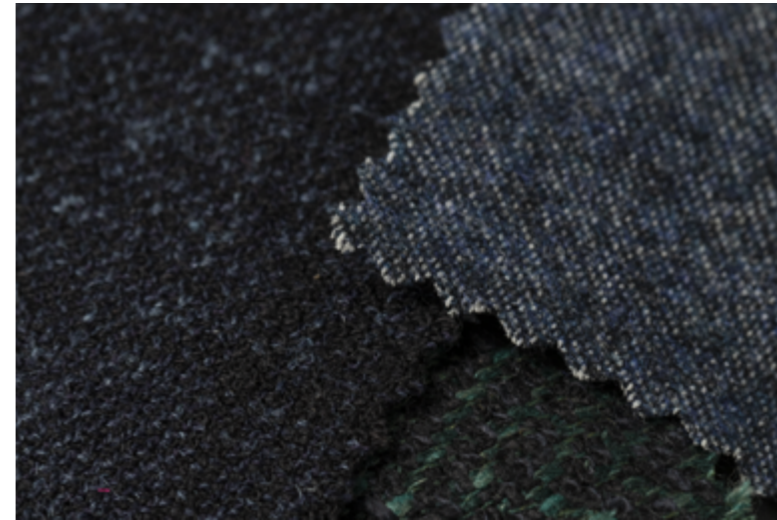
Try to have any damaged repaired by your local tailor as soon as it appears. Even small tears and rips can often be fixed. This helps extend the lifespan of your garment, in turn reducing waste.

# Preview FW22

You know the drill: after summer, comes autumn. And, somewhere before then, comes your new FW collection! So, what do we have in the works? Think 'stretch' with a predictably welcome side of cosy and warm.

For example, suits in multiple colours of water-repellent technical stretch fabrics by Olmetex. Slightly milled (flannel-like) wool-cashmere stretch wool from Colombo. Various S130 natural (bi-)stretch twills and flannels from Drago. A luxurious winter alpaca-linen stripe from Ferla. Zealander natural stretch and Mooving qualities in more sustainable wool from Loro Piana — plus, one sartorial check and one stripe in their naturally coloured pure wool. And, for your informal jackets and drawstring trousers, a range of super soft, smart-casual stretch cotton corduroy from Pontoglio.

For jackets, we're preparing (among others) a variety of cashmeres: a stretch knit-look for your more casual styles, blends with silk and wool from the masters at Loro Piana, and one special, super soft, more sustainable and 100% recycled cashmere. Best paired with (y)our equally comfy and exceptionally versatile FW22 shirts: including light cotton flannels, new piqué and high-stretch performance knits, and new colours of last season's bestselling S120 fine, pure wool jersey.



What else should we have by then? We'll introduce a brand-new shoe model. For your new line of custom knitwear, you'll have a grand total of at least four possible yarn qualities, each in your choice of single or double-ply yarn and a wide range of colours. That means you'll be able to, for example, create a custom, 100% cashmere turtle neck to both pair with your favourite winter suit, and wear as a separate with (drawstring) trousers, chinos and 5-pockets — e.g., in new FW22 colours of stretch moleskin and cotton-lyocell stretch corduroy. Made extra cosy and warm with a coat in one of the five upcoming FW22 wool-cashmere blends from Drago and Colombo. Other new developments arriving in time for FW22 include:

- One new coat design option: double-breasted peak lapels. For coats with an even sharper look.
- More handmade design options for your informal jackets. To make them even more sartorial.
- Extra pocket styles for your informal jackets: standard patch, slanted welt and harmonica.
- Fabric supplier labels added to your trousers — a nice detail, as the lone trouser rises in popularity.
- One new jacket design option: wide shawl lapels. Perfect for the festive season.

All in all, you can (of course) rest assured that FW22 will have everything you need to greet the season in practical, elegant style. We're excited to show you more! But not before we dive head first into the bounty of spring and summer — together with you, one custom garment at a time.

Happy customising!

# Any questions?

You know where to find us: our Custom Consultants and Customer Operations specialist team would love to hear them.



**KingsHouse GmbH** | Thomas-Wimmer-Ring 11 | 80539 München  
T: +49 (0) 171 99 66 123 | [www.kingshouse.de](http://www.kingshouse.de) | E: [info@kingshouse.de](mailto:info@kingshouse.de)

