

# THE WEDDING COLLECTION

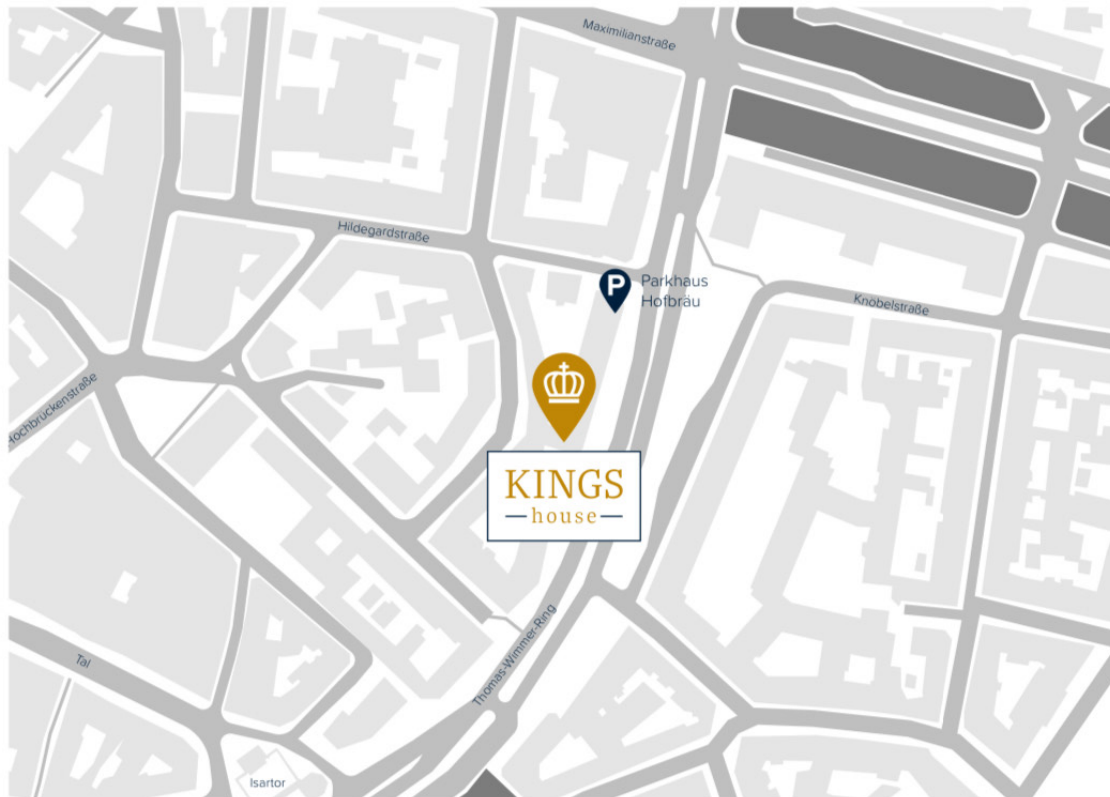
*Spring / Summer '24*



*Made-to-measure*



**KingsHouse GmbH** | Thomas-Wimmer-Ring 11 | 80539 München  
T: +49 (0) 171 99 66 123 | www.kingshouse.de | E: info@kingshouse.de



*Your big day is around the corner. An event of a lifetime, one you will remember for years to come. A day that special deserves nothing less. No exceptions.*

*Our collection of ceremonial wear offers refined tailoring with sophistication. No matter the season or occasion, we will dress you and your party from head to toe. All tailored to you, down to the last detail.*





## WHAT TO WEAR ON YOUR WEDDING DAY?

### *Our style guide*

Whether it is a mark of new beginnings or celebrating the lives of loved ones, dress for the occasion in a look that is meant for the memorable moments. An admirable sartorial statement, full of character – all yours.

Before selecting wedding attire, the most important thing to consider is, of course, the dress code. Black tie is probably the most straightforward, but 'black-tie optional' or casual may be a touch more difficult. Use this guide to find clarity and summer inspiration for the most widely used dress codes.

# THE DRESS CODES



## *White tie*

The most formal dress code of all, white tie requires a morning coat with a white shirt, waistcoat, tie or bow tie, and formal footwear like Oxford or Derby shoes. Some may choose to take it a step further by adding grey gloves and a black or grey top hat.

Morning coat: EVE025

Waistcoat: EVE017

Shirt: SH00102

Tie: TWD002

Pocket square: SH00102

Trousers: EVE020

Shoes: CAL01



## *Black tie*

Usually implying an evening event, the tuxedo is standard attire when it comes to black tie. Traditionally combined with a white shirt, black bow tie and black patent leather Oxford shoes. In summer, a white dinner jacket with black tuxedo trousers is also common.

Tuxedo jacket: TUX003

Shirt: SH00102

Bow tie: TSAT003

Pocket square: SH00102

Trousers: TUX003

Shoes: PAT01



## *Black tie optional or formal*

This is usually the same as black tie, with the option of branching out from the traditional tux into other colours and formal suits. You can wear a full tuxedo or opt for a suit in timeless hues with a white shirt and tie.

2-button jacket: WWM004

Shirt: SH00102

Tie: TS540

Pocket square: PSILK028

Trousers: WWM004

Shoes: POA05

# THE DRESS CODES



## *Semi-formal*

Offering the most flexibility in terms of comfort, semi-formal can include a classic suit and tie or even a shirt and trousers, as long as the overall look does not read as casual. Choose lighter colours and fabrics in summer, especially for daytime weddings.

2-button jacket: WEDS020

Shirt: SH00110

Tie: TKNIT008

Pocket square: SH00110

Trousers: WEDS020

Shoes: SDE06



## *Destination*

Tropical or destination weddings are usually warm affairs. Stick to suits in breathable fabrics like cotton or linen in lighter colours with a light shirt and a pair of loafers. If temperatures are extremely high, you can ditch the jacket entirely.

2-button jacket: EVE048

Shirt: SH00102

Pocket square: PLIN001

Trousers: EVE048

Shoes: SDE06



## *Festive*

A relatively new dress code, festive gives you permission to have fun with your look. For example, pairing a pastel suit with playful accessories, like a printed pocket square or a unique tie.

2-button jacket: EVE034

Waistcoat: EVE013

Shirt: SH00102

Tie: EVE013

Pocket square: EVE013

Trousers: EVE034

Shoes: POA06



EVE061

## TIPS & TRICKS

We have seen plenty of weddings in our time. Here is our advice to ensuring your day goes off without a hitch.

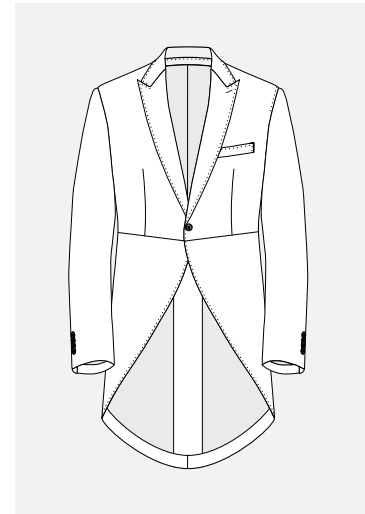
- Begin four months before your wedding date to give you enough time to explore your options, receive your garment and make any last adjustments.
- Let your groomsmen know what to wear, as well as where and when to get fitted.
- Opt for more relaxed, light and breathable fabrics for hot summer days.
- Get an extra shirt. Even a small stain can ruin your photos. Regardless, a fresh shirt for the second part of the day is always a good idea.
- Set time aside for your styling. Finding the right shoes, tie (or bow tie), pocket square, socks and cufflinks takes time.
- Wear in your shoes before the big day. Comfort is key to enjoying yourself.
- The groom doesn't wear a watch. Your only focus should be having fun.

# CREATE YOUR WEDDING SUIT

Know the dress code? Excellent, you are ready to create your custom wedding ensemble. Let us walk you through each step in curating your look from head to toe. From the possible fabrics and details down to the shoes and finishing touches.

## Choose the model for you

There's something for every dress code. From the traditional morning coat, short morning jacket or tuxedo to classic three- or two-piece suits or a Southeast-Asian-inspired Nehru jacket with trousers.



Morning coat



Short morning jacket



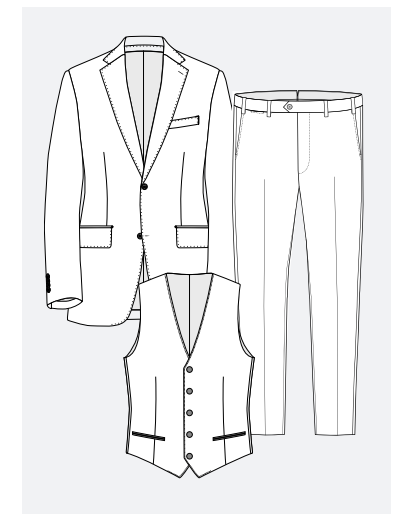
Two-piece suit



Tuxedo



Nehru jacket



Three-piece suit

### *Select the fabric*

We have something for every kind of occasion from traditional ceremonies to destination weddings. Choose from our wide range of fabrics to create your suit, whether it be a classic tuxedo, a textured or timeless suit, or something breathable and more colourful for summer.



#### **Linen blends**

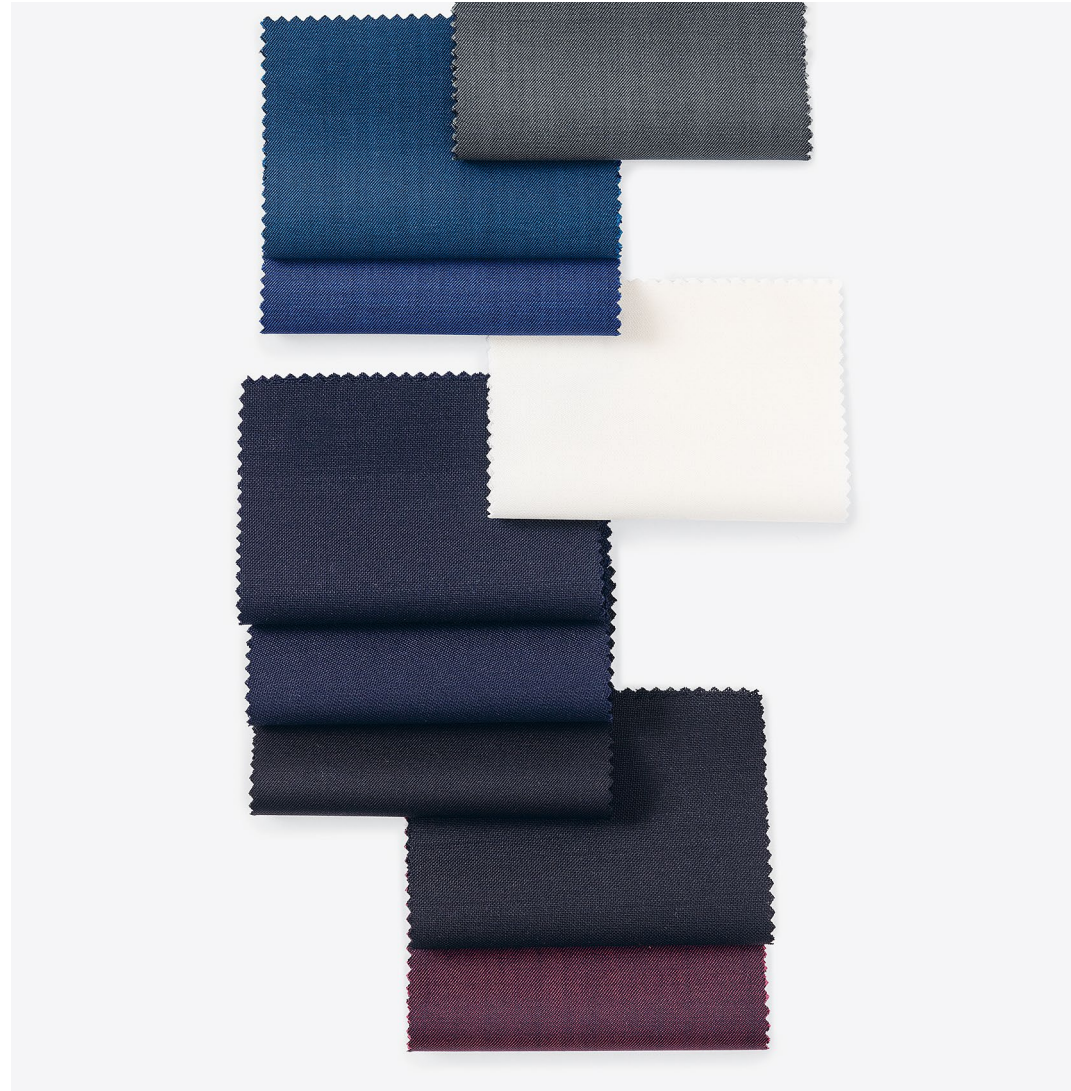
This selection is made from a luxurious and breathable blend of wool, silk and linen with a touch of added stretch for comfort. Available in various natural hues of sand, green and blue, perfect for tropical or destination weddings.



#### **Luxury wools**

Select from luxurious S130 fancy weaves that offer optimal airflow, lustrous S100 wools with a silky feel, effortlessly elegant and crease resistant S130 doppios, or Solaro tropicals loved for their slight shine and subtle structure.





### **Wool & mohair**

Classic, smooth, and crisp, these sophisticated blends of wool with mohair are a favourite for special occasions. Featuring a subtle two-tone effect and slight sheen in a range of refined shades including black, blue, burgundy and green.



### **Bamboo**

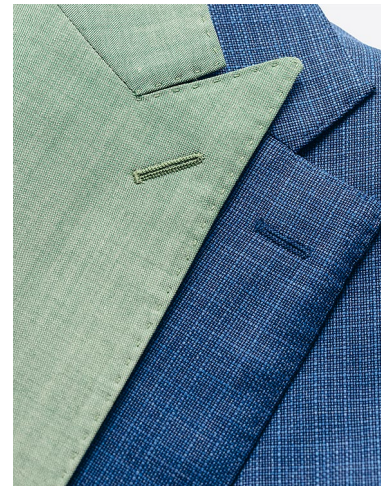
Craft a timeless look in black, navy or off-white with these 100% bamboo basketweaves. Made from the eco-friendlier fibres of the bamboo plant, the fabrics wear like a cool linen cloth, feel soft like cashmere, and boast a silk-like drape.

### Customise the details

From your pockets and lapels to the lining of your jacket – it's all up to you.



EVE057



EVE034 & WEDS021

#### Pick your lapel

The three basic types for wedding are the notch lapel, peak lapel and shawl lapel. Available in various widths and handmade buttonholes.



EVE057



Buttons 10, 11, 12, 15 & 51

#### Don't forget the finer details

We have countless button options to give your suit that special finishing touch. Mother of pearl buttons, made from pearl oysters, are a luxurious and classic detail.



EVE049  
Jacquard 8498 off-white with tonal paisley



Fancy 443, Fancy 404 &  
Jacquard champagne 8502



EVE061



**Add some fun with a fancy lining**

Your wedding suit's custom secret, ensuring it is as stylish on the inside as it is outside.

**Make it personal with a monogram**

Add your initials, wedding date or a special message under the collar.

## COMPLETE THE LOOK

A charming suit or jacket is a good start, but your outfit is incomplete without equally smart styling. The perfect shirt, shoes and accessories.



2-button jacket: EVE046  
Shirt: SH00102  
Tie: TWD002  
Pocket square: SH00102  
Trousers: EVE046  
Shoes: POA01

# THE PERFECT WEDDING SHIRT

Ensure your shirt fits you well and feels comfortable. Whatever choice you make, a custom-made dress shirt is essential to looking your best on the big day.

The most important thing is to select a shirt material that is airy and breathable. For a celebration in the morning or afternoon, you can't go wrong with an off-white hue. However, when it comes to black-tie wedding attire, there is no negotiating the colour of your shirt. It must be white and crisp.

Then you can start to play with your design and details like mother of pearl buttons or studs to match your cufflinks. If you are crafting a tuxedo shirt, a pleated or pique bib front has a certain traditional appeal while a hidden placket is a more modern look that will hide your buttons completely.



# WAISTCOATS

Choose a matching waistcoat in the same fabric as your 2-piece suit. Or mix things up with a vest that stands out from the rest of your suit – in a complementary colour, of course.



DR061



A sandy coloured 2-piece suit paired with an ivory waistcoat and matching accessories.

2-button jacket: DR061  
 Waistcoat: EVE013  
 Shirt: SH00102  
 Tie: EVE013  
 Pocket square: EVE013  
 Trousers: DR061

# PICK YOUR IDEAL GROOM SHOES

There are many styles of formal shoe for your special day. From the height of elegance to those destined for the beach. Here's our guide to the most popular models..

## *Plain toe loafers*

Our loafer with a completely plain toe. Perfect for evening weddings in velvet.



VELV002

## *Tuxedo shoes*

Our most elegant choice, usually crafted in patent leather. As the name suggests, this shoe is only suitable for tuxedos.



PAT01

## *Oxfords*

A versatile-yet-refined style you can wear for any formal occasion.



POA06

## *Derbies*

Ideal for your semi-formal affair, this model is a beautiful balance between casual and formal.



POA05

## *Loafers*

Whether you choose a penny or tassel loafer, this informal style is great for summer weddings.



SDE06

# THE FINISHING TOUCHES

Our tailors can help you pick out the perfect pocket square and a tie or bow tie to match with your suit.





# GET INSPIRED

What goes with what? The following pages should help inspire your imagination.



**EVE  
059** | 1-button jacket: EVE059  
Waistcoat: EVE059  
Shirt: SH00102  
Tie: TWD006  
Pocket square: PSILK029  
Trousers: EVE059



**EVE  
060** | 2-button jacket: EVE060  
Waistcoat: EVE060  
Shirt: SH00102  
Tie: TSILK017  
Pocket square: PSILK029  
Trousers: EVE060



**EVE  
052** | 2-button jacket: EVE052  
Waistcoat: EVE052  
Shirt: SH00005  
Tie: TS753  
Pocket square: SH00005  
Trousers: EVE052



**EVE  
061** | 2-button jacket: EVE061  
Shirt: SH00102  
Tie: TWD010  
Pocket square: PSILK029  
Trousers: EVE061



**EVE  
063**

2-button jacket: EVE063  
 Waistcoat: EVE063  
 Shirt: SH00141  
 Tie: TWD005  
 Pocket square: PSILK028  
 Trousers: EVE063



**WWMS  
014**

2-button jacket: WWMS014  
 Waistcoat: WWMS014  
 Shirt: SH00005  
 Tie: TWD001  
 Pocket square: SH00005  
 Trousers: WWMS014



**EVE  
034** | 2-button jacket: EVE034  
Waistcoat: EVE034  
Shirt: SH00102  
Tie: TWD001  
Pocket square: PSILK028  
Trousers: EVE034



**EVE  
044** | 1-button jacket: EVE044  
Shirt: SH00102  
Tie: TS748  
Pocket square: PSILK005  
Trousers: EVE044



**EVE  
031** | Morning coat: EVE031  
Waistcoat: EVE031  
Shirt: SH00110  
Tie: TWD001  
Pocket square: SH00110  
Trousers: EVE031



**WEDS  
020** | 2-button jacket: WEDS020  
Waistcoat: WEDS020  
Shirt: SH00005  
Tie: TGREN012  
Pocket square: SH00005  
Trousers: WEDS020



**DR  
061** | 2-button jacket: DR061  
Waistcoat: EVE013  
Shirt: SH00006  
Tie: EVE013  
Pocket square: EVE013  
Trousers: DR061



**DR  
062** | 2-button jacket: DR062  
Waistcoat: DR062  
Shirt: SH00006  
Tie: TSILK018  
Pocket square: PSILK028  
Trousers: DR062



**DR**  
**064**

2-button jacket: DR064  
Waistcoat: DR064  
Shirt: SH00230  
Tie: TSILK018  
Pocket square: PSILK028  
Trousers: DR064



**DR**  
**068**

2-button jacket: DR068  
Waistcoat: DR068  
Shirt: SH00230  
Tie: TSILK018  
Pocket square: PSILK028  
Trousers: DR068



**EVE  
012** | 1-button jacket EVE012  
 Shirt: SH00102  
 Waistcoat: EVE012  
 Bow tie: TSAT003  
 Pocket square: SH00102  
 Trousers: TUX003



**TUX  
004** | Tuxedo jacket: TUX004  
 Shirt: SH00108  
 Bow tie: TSAT003  
 Pocket square: SH00108  
 Tuxedo trousers: TUX004





**TUX  
006**

Tuxedo jacket: TUX006  
 Shirt: SH00005  
 Bow tie: TSAT003  
 Pocket square: SH00005  
 Tuxedo trousers: TUX006



**TUX  
003**

Tuxedo jacket: TUX003  
 Waistcoat: EVE018  
 Shirt: SH00005  
 Bow tie: EVE018  
 Pocket square: SH00005  
 Tuxedo trousers: TUX003