

KingsHouse

Spring Summer

2025

KINGS
—house—



Contents

08

Knitwear

Smart-casual versatility for spring and summer



10

New yarn quality: S160 ultra-fine merino wool

Soft like cashmere, made in Italy by Loro Piana



18

SS25 jackets

Defined by their breathability and lightness



42

365 & 365-Seasonal shirts

New linen prints, cotton seersucker and lightweight denim

52

Custom jeans, 5-pockets & chinos

Updates, tips and a quick refresher



64

SS25 suits

Handpicked to shine both as separates and full suits



84

Quilted vests

Now even more versatile



86

Fancy linings

From retro to various beach and nautical themes

88

SS25 looks

Fresh sartorial favourites and styling ideas for the sunny season



100

Spring-Summer capsule

When convenience is key

104

Transitional outerwear

Essential outerwear for the in-between seasons



110

The best seasonal legwear

Spoiler: more than just shorts

116

Ties & pocket squares

Curated in a palette to complement your SS25 seasonals

120

Summer wedding

Reimagining traditions in 2025



134

Custom shoes

Because footwear also defines your summer style



144

Choose your essentials wisely

What to pack for your summer getaways



Knitwear

for the sunny seasons

Once reserved for the colder months, today's lightweight, breathable knits bring a new dimension to your spring and summer wardrobes.

Whether worn solo in the blazing heat or layered for unpredictable weather, your seasonal knits stand out for their **smart-casual versatility and ability to adapt** to a range of temperatures. It all depends on your choice of model, yarn quality and knit type.

Turn the page to learn all about (y)our latest knitwear developments, including your:

- **New yarn quality:** S160 ultra-fine merino wool.
- **New 'contrast colour' design option:** full collar, hem & cuffs.
- **New design option:** straight cut.
- **Extended fit tool values:** now allowing you to add/ subtract ± 9 or 12 cm in body length (previously only ± 3 or 6 cm) and ± 7.5 or 10 cm in sleeve length (previously only ± 2.5 or 5 cm).



New yarn quality: S160 ultra-fine merino wool

Customise your knitwear

We're thrilled to be adding **Loro Piana's S160 yarn** to your list of available options – **now your seventh yarn quality** – just in time for the warmer seasons. A true embodiment of luxury and excellence, this remarkably durable yarn is crafted from **100% ultra-fine merino wool**, sourced from the pristine landscapes of Australia and New Zealand where some of the world's best wool is cultivated.

Offering **a softness and fluidity that rivals high-quality cashmere**, its **extra-light weight** ensures garments that easily adapt to **any season** or climate for comfortable year-round use.

The most distinguishing feature of this S160 wool yarn is its exceptional fineness: with fibres averaging a diameter of 15.5 microns, similar to the 14- to 16-micron range of premium cashmere.

- **Available colours:** 15
- **Available knit types:** single yarn solid and double yarn solid.
- **Available models:** all models, excluding only the full-button bomber, full-button with shawl collar, leisure pants, beanie and scarf.





K10123 with K10124 contrast color

New design option:

Contrast colour: full collar, hem & cuffs

Customise your knitwear

Create a classic sports-inspired look by opting for a contrasting colour on your knitwear's collar, hem and sleeve cuffs – **capturing the timeless elegance of traditional tennis, cricket and rugby styles.**

- **Available models:** expected in all polo styles, final models still to be confirmed.
- **Available yarn qualities (all):** pure cashmere, wool & cashmere, cashmere & silk, cotton & cashmere, cotton & silk, extra-fine merino wool, S160 ultra-fine merino wool.
- **Available knit types (all):** single yarn solid, double yarn solid, half English rib, cable.

Live in April 2025. Stay tuned for more details!

New design option: Straight cut

Customise your polos and cardigans
with polo collar

Knitwear often has a slightly tapered silhouette – achieved in part by a ribbed hem, designed to keep the garment securely in place while providing a sleek, polished look.

For **a more casual style** on your polo knits and cardigans with polo collar, you can now opt instead for a straight cut, featuring a slightly wider silhouette and a plain, straight hem. **Ideal for an untucked look with a more relaxed, laid-back vibe.**



Essential summer knits

Showcasing your single-ply, summer-ready yarn qualities.



- 1. Short-sleeved polo with buttons**
Supremely soft, lightweight and luxurious in petrol blue **S160 ultra-fine merino wool** (K10160 LP S160).
- 2. Short-sleeved t-shirt**
Crafted in sand-coloured **cotton & cashmere** to create a chic and adaptable seasonal staple (K10126).
- 3. Short-sleeved t-shirt**
Lightweight and versatile in the easy to style shade of beige and sun-friendly blend of **cashmere & silk** (K10086).
- 4. Polo with zip**
A sporty twist on a classic style, in off-white **cotton & silk** for an extra-cool feel and radiant shine (K10152).
- 5. Short-sleeved crew neck**
Breathable and soft in a light sage hue of **cotton & cashmere**. Easy to wear under your jacket or on its own (KS10135).
- 6. Full-zip model**
The ultimate model for seasonal layering, pictured here in light denim blue **cotton & cashmere** (K10114).
- 7. Short-sleeved polo with buttons and straight silhouette**
Featuring a more relaxed fit and straight hem for an untucked yet polished look, in medium blue mélange **extra-fine merino wool** (K10002).
- 8. Cardigan**
An easy layer to add or remove as needed, with plenty of classic charm in denim blue **S160 ultra-fine merino wool** (K10161 LP S160).

SS25 jackets

Seasonal highlights

Our spring and summer collections have always been **defined by their breathability and lightness**. For SS25, we proudly present a stunning line-up of **27 new seasonal jacket fabrics**. Crafted from various compositions of wool, silk and/or linen, each offers a perfect blend of elegance, versatility and comfort.

And why have we chosen to centre (y)our collection around these three natural fibres? Easy. Wool provides a clean look with natural crease resistance, silk a luxurious sheen and softness, and linen a refreshingly crisp, airy quality. The result: **a range of options for every summer style and occasion**.



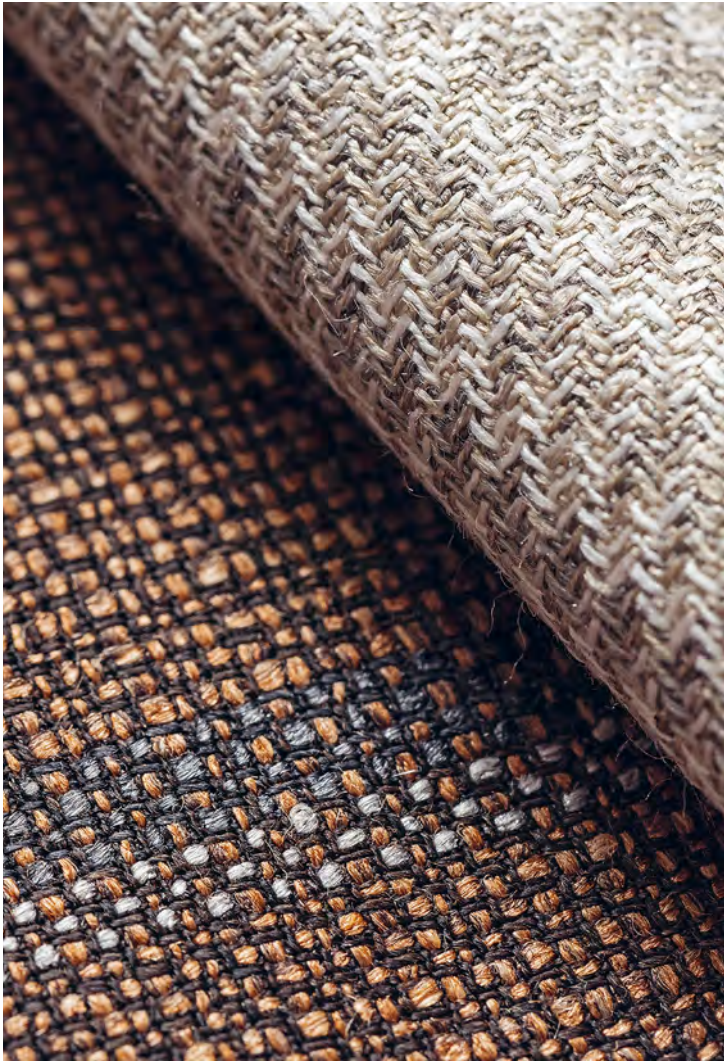
'Summertime' jacket fabrics

made in Italy by Loro Piana

Loro Piana's 'Summertime' fabrics are an industry highlight, widely coveted for their unique **wool-silk-linen** blends that offer the perfect balance of **softness, lightness and breathability** for the warmer seasons. Now available as part of our SS25 jacket collection in eight versatile colours and patterns, including these three neutral checks.



9100



9109 & 9104



Utility jacket
with buttons: 9100
Crew neck knit: K10168
5-Pockets: COL001
Shoes & Belt: SUS06

Summer utility

This sand-toned utility jacket combines urban functionality with elevated style thanks to its sophisticated grey glencheck. Ideal for warm summer days, it pairs effortlessly with off-white pieces for a fresh, laid-back aesthetic.



Double-breasted jacket: 9127
Shirt: SH00376
Pocket square: PLIN004
Trousers: TR013
Shoes: SUS03

Bold glencheck

This double-breasted royal blue and ivory glencheck jacket makes a statement with its overlaid brown windowpane and salt-and-pepper linen slubs. Styled here with neutral essentials, allowing the eye to focus on the jacket's striking details and design.

'Summertime' jacket fabrics

made in Italy by Loro Piana

Included in your collection of 'Summertime' jacket fabrics, these three blue glenchecks in Loro Piana's standout composition of wool, silk and linen provide the **cool comfort, refined style and remarkable crease-resistance** you need for a polished look from late spring through early autumn.

9125, 9127 & 9129



Elegant draped jackets

Pure silk by Di Pray

It's rare to find a men's jacket fabric in **pure silk**, but when you do: it's **a statement of true luxury**. Available in two cheerful colourways, each crafted in a glencheck weave from mélangé-spun yarns for added visual interest, and with natural stretch for extra comfort and versatility.



9112 & 9117



9117 & 9112



2.5-button jacket: 9117
Shirt: SH00376
Pocket square: PS607
Trousers: TR010
Shoes: SDE06

Silk in sage

With its air of effortless elegance, this sage green glencheck in pure silk brings a lustrous texture that's ideal for spring evenings or semi-formal summer events. Styled here with light neutrals to keep the look bright and sophisticated.



Utility jacket
with buttons: 9126
Crew neck knit: K10117
Jeans: DEN006
Shoes: SUS10

Cool cobalt

Crafted from a versatile cobalt blue herringbone in your utility jacket style, this lightweight piece in luxurious wool, silk and linen delivers both excellent breathability and a clean, crisp feel. Pair it with white jeans and slip-on sneakers for a fresh summer look.

Elegant draped jackets

Wool, silk and linen by Di Pray

In a process known as overdyeing, these classic weaves were first coloured and then enhanced with a secondary dye to achieve a richer, more nuanced hue. **Highly versatile** thanks in part to their light four-season weight, we recommend them for their elegant drape, soft feel, and **excellent all-round comfort and breathability**.

9126, 9114, 9108 & 9102



9102



Ultimate summer-blend jackets

Wool, silk and linen by Drago

Showcasing a fresh, refined lightness to help you capture the essence of summer, we've curated five seasonal designs in this **breathable blend of fine merino wool, silk and linen** to complement both your traditional and informal jacket styles – from Full Canvas to full-on utility.



9121, 9116 & 9118



9116



2.5-button jacket: 9121
Crew neck knit: K10028
Pocket square: PS606
5-Pockets: COL008
Shoes: SUS09

Seasonal greens

Complete with a dark tonal overcheck, this breathable bottle green wool-silk-linen jacket is perfect for both summer office wear and your special events. Paired here with a matching green knit and light sand trousers to balance the look.



2-button jacket: 9101
Shirt: SH00163
Pocket square: SH00163
Trousers: LIN002
Shoes: SUS03

Easy-going elegance

With a wrinkle-resistant finish to ensure all-day wearability, this taupe with light blue check brings a relaxed yet refined vibe. Styled for summer with sand-coloured linen trousers plus a matching chambray shirt and pocket square.

Ultimate summer-blend jackets

Wool, silk and linen blend by Delfino

Featuring 13% linen to enhance their earthy look and texture, these two checks strike a clean balance between modern and traditional. Available while supplies last in one taupe with light blue overcheck (p. 54, left) and one brown with bottle green (below right). Yours for the making in a quality **light enough for summer, yet adaptable enough for the in-between seasons.**

9110 & 9101



9110

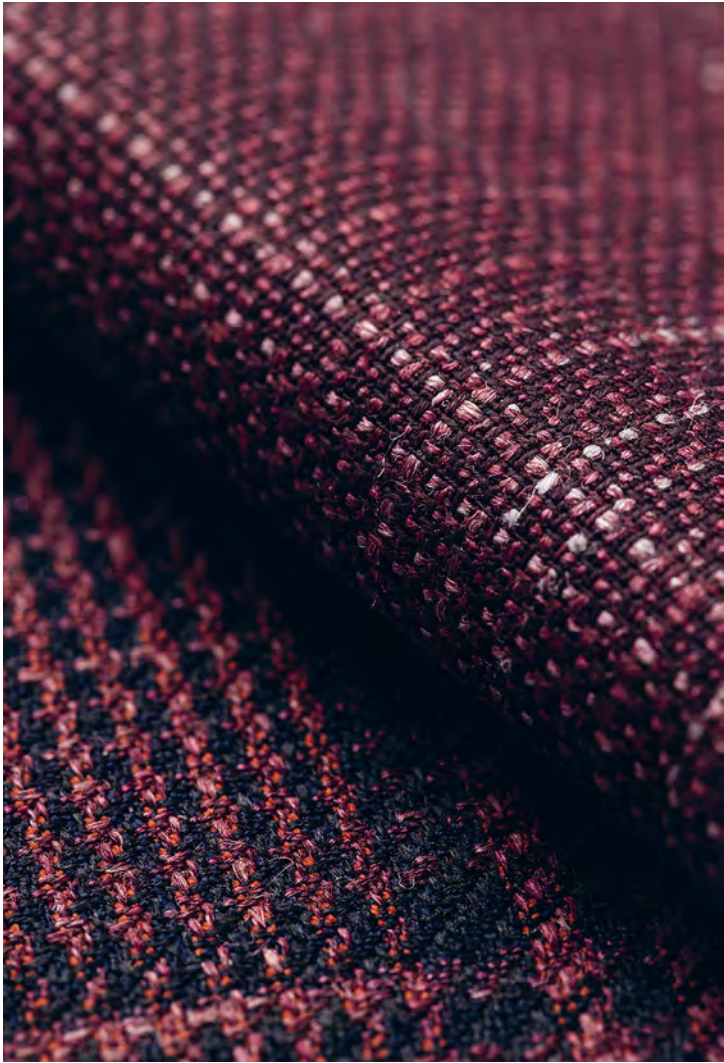
Distinctive seasonal jacket fabrics

Wool, silk and linen, made in Italy by Loro Piana and Drago

For the gentleman seeking **something a little different**, these two wool-silk-linen checks in aubergine and burgundy offer a refined and distinctive choice. With their breathable lightness and rich texture, they're perfect both for **special occasions** and whenever you're after a more whimsical, standout style.



9113



9115 & 9113



2.5-button informal
jacket: 9115
Shirt: SH00179
Drawstring trousers: COL008
Shoes: SDE06

Breathable burgundy

Looking to turn heads without being too bold? This 2.5-button burgundy glencheck jacket does just the trick with its timeless design and warm, inviting colour. Styled here with a shirt in dark blue cotton piqué knit, light sand drawstring trousers and taupe suede split-toe Bluchers.

365 & 365-Seasonal Shirts

Our new 365 and 365-Seasonal shirt fabrics strike the perfect balance between casual elegance and effortless comfort: **from luxurious pure linen prints and crisp cotton seersucker to breezy lightweight denim.**

Embracing a sophisticated, non-formal approach, each of these shirtings can easily be **dressed up or down to suit any occasion** – for example, with an Unconstructed jacket and matching trousers or with your favourite pair of Bermudas and lightweight sneakers.



Lightweight cotton washed denim shirts

365

Introducing two new slubbed denim twills **with a chic salt-and-pepper effect**, reminiscent of a well-worn vintage aesthetic. **Now always in stock** as part of our 365 collection, these versatile, smart-casual cottons weigh in at a mere 85 grams, making them an **unusually lightweight** choice with a soft handfeel for all-day comfort.



SH00420 & SH00419



Easy office

Our new lightweight denims are ideal for an office-appropriate look that won't weigh you down. Paired here with sand stretch cotton trousers with turn-ups and an extended waistband, plus taupe split-toe Bluchers to keep things professional and cool.

Shirt: SH00419
Trousers: Cotton 008
Shoes: SDE06



Tonal tropics

Ensure maximum breathability and style under the sun in light-coloured, head-to-toe linen. Achieved here with a shirt crafted from your new white-on-white paradise print, worn untucked with pleated trousers and loafers for a relaxed-chic feel.

Shirt: SH00416
Trousers: LIN002
Shoes: SUS03

Linen shirts
365-Seasonal

This bold blue stripe is one of our **four new summer-ready prints on lightweight linen** – also available in bottle green stripes, tobacco stripes, and one sand-coloured floral design. Additionally, this season introduces **two tropical-themed linen prints crafted with white pigment** to create an elegant 3D effect (shown left). All extra breathable with a crisp, thermoregulating feel.

SH00412, SH00413, SH00414, SH00415, SH00416 & SH00418



SH00412

Cotton seersucker shirts

365-Seasonal

Not just for suits and separates! **The seersucker weave also excels as a shirt**, with its iconic crinkled texture ensuring minimal skin contact for enhanced coolness, excellent wrinkle resistance and a casual yet classic look. Available now in white and navy, both **in lightweight 100% cotton**.



SH00410



Navy breeze

Stay cool in versatile navy shades with a short-sleeved shirt in your new cotton seersucker paired with stretch cotton twill Bermudas. Complete with comfortable midnight blue suede slip-on sneakers for extra laid-back ease.

Shirt: SH00411
Bermudas: Cotton 012
Shoes: SUS10

Custom jeans, 5-pockets & chinos

A stylish and adaptable wardrobe hinges on choosing the right legwear. Whether your aim is to upgrade your work attire, bring some flair to your weekend outings or enhance your daily look, your pants – especially your **choice of fabric** – can be a total game-changer.



Choose your fabric

Because quality matters.

Fabric choices often come down to two factors: style and weather.
Use this guide to ensure your pick fits the forecast.



Spring & summer twill

Available in 16 colours, your **garment-dyed stretch fine twill** is perfect for warm weather thanks to its:

- Light, cooling weight
- Breathability
- Comfortable stretch
- Soft feel



Spring & summer denim

Made in Italy by Candiani, all nine colours of your **super-stretch denim** are ideal for warm weather thanks to their:

- Light, cooling weight
- Breathability
- Outstanding stretch
- 9-10 oz.



Year round

Washed (selvedge) denim and **garment-dyed stretch broken twill** are reliable in all seasons thanks to their:

- Medium, versatile weight
- Breathability
- Soft feel



Fall & winter

Moleskin, corduroy and **raw selvedge denim** are great for the cooler seasons thanks to their:

- Heavy, warmer weight
- Insulating properties
- Durability

Get inspired: Jeans, 5-pockets & chinos

Warmer weather seems to naturally invite a shift from formal trousers to your more relaxed styles of legwear. With options ranging **from casual to polished**, the right fabric will ensure you stay both **cool and sharp**.



Jeans

The most casual of legwear options – depending on how you style them. Pictured here in **washed stretch selvedge denim**: softer than regular or rigid selvedge, loved for its signature outseam and effortless charm.

WAS014

5-pockets

Offering the casual style of jeans without the denim, *with* extra versatility, for easy transitions from relaxed to smart-casual settings. Pictured here in sand **stretch cotton twill**: medium weight, breathable and dependable all year round.

COL008



Chinos

The dressiest of casual legwear styles, yet equally suited to work or play. Pictured here in off-white for an iconic summer look, ideal in your heat-friendly **stretch cotton twill** and **garment-dyed stretch fine twill** qualities.

COG013

New colours:

365 denim

Customise your jeans

With summer just around the corner, we've added two new colours to your 365 (super-)stretch denim collections:

One 9 oz. stretch ecru – natural and undyed (including subtle yet visible cotton seeds), with a bit of stretch for added comfort.

One 10 oz. super-stretch white – our most comfortable denim yet thanks to its exceptional elasticity, now available in your most iconic summer shade.



WAS024 & WAS025

SS25 suits

Seasonal highlights

Lightweight and ideal for summer, these seasonal textiles also boast **the best cooling properties offered by the world's finest mills** – including 17 'Summertime' wool-silk-linen blends made in Italy by Loro Piana. Handpicked in a sophisticated range of colours and patterns, inspired by both classic and natural palettes.



'Summertime' suit fabrics

made in Italy by Loro Piana

Always made from a blend of wool, silk and linen, the 'Summertime' line of fabrics has received significant buzz in recent years – and we think it's well deserved. Hence, we've chosen **10 of the newest seasonal suit colours and patterns** to grace your summer wardrobe, showcased here in one caramel, one light petrol and one forest green pencil stripe.



5980 & 5996



5996



Double-breasted
jacket: 5989
Shirt: SH00162
Pocket square: PLIN002
Trousers: 5989
Shoes: SDE06

Garden green

This forest green wool-silk-linen suit exudes a sense of understated elegance with its salt-and-pepper texture and timeless pencil stripes. Ideal for garden parties or al fresco dinners as styled here with a white cotton-linen shirt and taupe suede penny loafers.



2.5-button jacket: 5987
Crew neck knit: K10013
Pocket square: PS607
Trousers: 5987
Shoes: SUS03

Refined breathability

A fresh take on summer sophistication in green: breathable, lightweight and with a touch of stretch for added comfort. Styled here for peak coolness and simplicity with a soft off-white knit, linen-silk pocket square and brown suede loafers.

'Summertime Move'
suit fabrics

made in Italy by Loro Piana

Loro Piana's 'Summertime Move' fabrics feature **the same innovative blends of wool, silk and linen, but always with a touch of added stretch**. Offering enhanced practicality and comfort, these luxurious textiles retain the distinctive look and cooling performance of the original (see p. 66-67) but are even more suited to, for example, a relaxed weekend getaway – or anytime freedom of movement is especially key.

5987, 5986 & 5976



5976

Solaro suits

S130 Solaro wool by Drago

By now, our Solaro herringbones have become iconic for our **festive and ceremonial looks**, featuring a subtle yet radiant two-tone effect in exceptionally soft S130 wool. That's why we're adding **five new stunning shades**, just in time for summer and available only while supplies last in ivory, dark green and two blues.



5967



5990, 5988 & 5967



- 2-button jacket: 6000
- Shirt: SH00149
- Tie: TS814
- Pocket square: SH00149
- Trousers: 6000
- Shoes: POA05

Radiant blue

For special occasions in summer, nothing beats the elegance of this blue Solaro herringbone and its luxurious natural sheen. Finished here as a two-piece suit with wide peak lapels, straight jet side pockets and blue mother-of-pearl buttons to create a truly polished look.



2.5-button jacket: 5977
Polo knit: K10084
Pocket square: PLIN009
Trousers: 5977
Shoes: SDE06

Classic grey

This light grey S130 wool with a soft glencheck pattern is ideal for warm-weather events or a day at the office, as styled here with an off-white polo knit. Looking for a more formal twist? A crisp twill shirt and silk tie will have you on your way in no time.

S130 wool with natural stretch suits

S130 wool by Drago

The beauty of natural stretch lies in its speciality weave, creating flexibility without the need for synthetic fibres. Crafted from **pure, lightweight S130 merino wool**, these three remarkable checks go a step further by incorporating **natural bi-stretch** – meaning extra give in both the warp and weft, for unmatched comfort and ease of movement. Easily adaptable to any occasion, from formal to casual.

5977, 5972 & 5978



Striped summer suits

Wool and silk by Drago

Sunglasses, check! Perfect, because you'll want to pair them with one of these seasonal pencil stripes in ivory or taupe. With **a light summer weight of 225 grams**, their vintage feel combines with an elegant touch of 7% silk to create a refreshing and slightly extravagant twist.



5968 & 5974



5974



Double-breasted jacket: 6002
Shirt: SH00375
Pocket square: SH00375
Trousers: 6002
Shoes: SUS10

Striped sophistication

With its tonal pencil stripes and double-breasted style, this Neapolitan blue S130 suit with natural bi-stretch exudes both class and distinction. Paired here with a light blue shirt in breathable modal-wool and midnight blue loafers for a laid-back summer twist.



2.5-button jacket: 6009
Shirt: SH00211
Pocket square: SH00211
Trousers: 6009
Shoes: PLA01

Dark and handsome

This dark blue S170 wool suit is all about quiet luxury, offering a super-soft touch and maximum elegance without drawing too much attention. Paired here with a midnight blue shirt in wrinkle-free S120 jersey and understated black loafers for a complete tonal look.

Natural bi-stretch Wish[®] suit fabrics

made in Italy by Loro Piana

As fine as cashmere but even more adaptable to heat, this S170 merino wool is **breathable, soft to the touch and impressively lightweight, clocking in at only 215 grams**. Plus, it moves with you thanks to its **natural two-way stretch**, further enhancing its wearability in any climate.



6009

'Jersely' wool, silk & linen suit fabrics

made in Italy by Loro Piana

If you've already tried Loro Piana's 'Jersely' quality, then you know why it's special: **woven yet as flexible as jersey**, supremely comfortable yet durably sharp. Add to that its popular composition of **stretch wool, silk and linen** – offering lightweight breathability with a luxurious, refined sheen – and you've got yourself a remarkable addition to your seasonal wardrobe. Available for SS25 in one sand and one indigo.



6010



6011 & 6010



Utility jacket
with buttons: 6011
Popover: SH00310
Trousers: 6011
Shoes: SDE06

Two-piece utility

Use this jersey-like stretch fabric with your 5-button utility jacket and flat-front trouser styles to create a versatile smart-casual suit, complete with bellow side pockets for an extra laid-back touch. Styled here with a popover in light grey piqué knit and taupe Bluchers.



Utility jacket: LINS002
Shirt: SH00374
Trousers: LINS002
Shoes: SDE06

Urban edge

This modern taupe two-piece suit takes the utility look to new heights: with a zip and snap closure, large military-inspired pockets and matching turn-up trousers, all in cool 100% linen. Perfect for warm-weather city outings with an off-white linen shirt and taupe tassel loafers, or worn as separates as desired.

Linen suits

365 & 365-Seasonal

Made from the more eco-friendly flax fibre, linen’s ability to keep you **cool, dry and breezy** keeps us coming back for more. Part of ‘the secret’ of a linen suit is to embrace its natural wrinkles as the day goes on, creating an **effortless sophistication** that’s perfect for warm-weather wear. Available in the 365 colours of sand, navy, white and black, plus the 365-Seasonal colours of cognac and taupe.

LINS002



LINS001 LINS002 LINS002 & LINS001



Stretch seersucker suits

365

Seersucker has long been **an iconic choice for summer suits**, featuring a unique weave responsible for its charmingly puckered surface. In addition to enhancing its visual interest, this also creates a 'pocket' of air between the fabric and skin, improving airflow and keeping the wearer **comfortably cool**.



Refreshingly summer

Effortlessly breezy, your stretch cotton seersucker is also ideal as a safari jacket and drawstring trousers, whether worn together or separately. Styled here for your sun-filled weekend adventures with a short-sleeved t-shirt knit and sand-coloured city loafers.

New fabrics for quilted vests

Now also in S130 wool, linen, corduroy and more.

The quilted vest just got even more versatile thanks to **an expanded selection of fabrics**: now also available in, for example, **any of your S130 wool, linen and corduroy qualities** (shown below in light grey stretch cotton-lyocell). Layer your vest for extra warmth or wear it solo on your weekend adventures for flexible protection and a sharp, laid-back vibe. More details to come!



Seasonal layering

Try these all-new possibilities together for peak comfort, function and style in a modern palette: your quilted vest in blue S130 wool with a grey micro-check, a light slate blue S160 merino knit and water-repellent drawstring trousers in your new bone-coloured technical.

Quilted vest: DRS110
Crew neck knit: K10158
Drawstring trousers: OLM005
Shoes: SUS08

Fancy linings

Gear up for the sunny days ahead with your favourite seasonally themed lining, **handpicked to complement the colours of (y)our SS25 suit and jacket fabrics.**

Now available in 13 vibrant prints – from retro, abstract and geometric to various beach and nautical themes.



Get inspired: **SS25 looks**

In search of **fresh sartorial favourites** and **styling ideas** for the sunny season?

Simply turn the page to discover **20 head-to-toe looks** designed for the modern man – from summer-ready suits and lightweight layers to sophisticated formal pieces, casually cool ensembles and more.



Casual elegance

Create a fresh take on casual elegance by mixing **a plum seasonal with your 5-button utility style** and desired finishings: from pleated sleeve cuffs, a belt and four large safari pockets to minimalist side-seam or no-pocket designs. All it takes is a soft knit and lightweight trousers to round off the look.



Utility jacket with buttons: 9113
Crew neck knit: K10084
Drawstring trousers: COL008
Shoes: SUS06



Safari jacket with belt: 9114
Polo knit: KS10137
5-Pockets: COL008
Shoes: SUS06



Double-breasted jacket: 9112
Polo knit: K10169
Pocket square: PLIN006
Trousers: Cotton 004
Shoes: SDE06



2.5-button jacket: 5983
Polo knit: K10152
Pocket square: PS607
Trousers: 5983
Shoes: SUS03

Modern mauve

Set the tone for modern luxury in warm mauve hues, whether crafted **as a double-breasted jacket in rare pure silk or a two-piece suit in breathable wool, silk and linen**. Especially seasonal when paired with earthy neutrals, from light-coloured knits to white stretch cotton trousers and chocolate brown suede shoes.

Seasonal shine

Your ivory Solaro is an obvious choice for grooms, thanks in part to its pure S130 wool with natural bi-stretch. For wedding guests, your wool-silk-linen blends all come highly recommended, including this blue houndstooth jacket with windowpane. **Breathable, chic and radiant – from pre-ceremony pics through afterparty.**



2.5-button jacket: 5967
Shirt: SH00000
Tie: TS811
Pocket square: PS603
Trousers: 5967
Shoes: SUS03



2-button jacket: 9124
Crew neck knit: K10158
Pocket square: PLIN002
5-Pockets: COL008
Shoes & Belt: SUS06



2.5-button jacket: 5997
Shirt: SH00374
Pocket square: PLIN002
Trousers: 5997
Shoes: SDE06



2.5-button jacket: 9125
Polo knit: K10159
Pocket square: TGREN006
Trousers: Cotton 027
Shoes: SUS10

Cool blues

From the clean lines of this slate blue pinstripe suit to the timeless appeal of the glencheck jacket, **these blue-toned looks both combine sharp tailoring with a breathable wool-silk-linen blend** – ideal for summer events. Easily styled with a pure linen shirt or tonal knit, plus your favourite seasonal loafers.

Naturally refined

Blur the lines between formal and casual with a **5-button safari suit in Loro Piana's luxury stretch blend of wool, silk and linen**, or opt for the more understated yet equally elegant 2.5-button jacket in a crisp seasonal basketweave. Tip: keep the earthy colour palette clean and fresh with an off-white shirt or polo knit and trousers.



Safari jacket with belt: 5986
Shirt: SH00374
Trousers: 5986
Shoes: SUS03



2.5-button jacket: 9116
Polo knit: K10084
Pocket square: PS602
5-Pockets: COL001
Shoes: SDE06



2.5 button jacket: 5985
Shirt: SH00371
Pocket square: PS607
Trousers: 5985
Shoes: SUS05



2.5-button jacket: 9118
Shirt: SH00374
Pocket square: PLIN001
Trousers: Cotton 008
Shoes: SUS03

Pistachio

Perfect for a special event or upscale brunch, pistachio hues combine with a crisp white shirt and suede loafers to create a clean and modern aesthetic. Showcased here **in two wool-silk-linen blends**: one linen-heavy sage green with excellent crease resistance and one balanced houndstooth with plenty of character and visual depth.

Warm caramel

Is a caramel-coloured safari jacket in luxurious wool, silk and linen **the definition of smart-casual?** We think so: with or without a belt and matching trousers, both of which only increase your styling options. Effortlessly paired with light-coloured basics, such as a soft crew neck or polo knit and comfy drawstring trousers.



Safari jacket with belt: 5980
Crew neck knit: K10013
Trousers: 5980
Shoes: SDE06



Safari jacket: 9108
Polo knit: K10169
Drawstring trousers: COL008
Shoes: SUS06



Double-breasted jacket: 5968
Shirt: SH00376
Pocket square: PLIN001
Trousers: 5968
Shoes: SUS03



2.5-button jacket: 9109
Shirt: SH00376
Pocket square: PLIN009
Trousers: Cotton 008
Shoes: SUS03

Neutral chic

From light taupe to chestnut, your brown-toned seasonals **add a touch of character without being overly bold.** Ideal for a sun-filled special event, whether crafted as a timeless windowpane jacket or double-breasted pencil stripe suit. Always well paired with a crisp white shirt and chocolate brown suede loafers.

Monochromatic

Easy to achieve yet always elegant, the power of the monochromatic look lies in its simplicity. Case in point: both this light petrol suit in tropical wool, silk and linen, paired effortlessly with midnight blue accents, and this light beige wool-silk-linen herringbone utility jacket, styled tastefully with an off-white knit and drawstring chinos.



2.5-button jacket: 5996
Polo knit: K10117
Pocket square: TGREN006
Trousers: 5996
Shoes: SDE09



Utility jacket with buttons: 9102
Crew neck knit: K10084
Drawstring trousers: COL008
Shoes: SDE06



Two-way zip vest: SEER006
Polo knit: K10125
Bermudas: SEER006
Shoes: SUS09



Shirt: SH00418
Trousers: LIN002
Shoes: SUS03

Holiday vibes

The 'tailored casual look' and **summer holidays** clearly go hand in hand, as showcased here by this stretch seersucker vest and Bermuda shorts, and your new light blue floral linen shirt with linen pleated trousers. Both easily styled with your choice of lightweight summer shoe.

Spring-Summer capsule



Fresh blues

- 01** Two-way zip vest in navy blue silk-wool basketweave (BL0038)
- 02** Shirt in navy modal-wool (SH00401)
- 03** T-shirt knit in off-white cotton & silk (K10152)
- 04** T-shirt knit in navy blue cotton & silk (K10148)
- 05** Low-top city loafers in midnight blue summer suede (SUS10)
- 06** Jeans in classic blue rigid selvedge denim (WAS015)



Soft sands

- 01** Utility jacket in beige silk-wool basketweave (BL0034)
- 02** Polo knit in sand mélange extra-fine merino wool (K10014)
- 03** 5-pockets in off-white stretch twill (COL001)
- 04** Shirt in sand linen (SH00258)
- 05** Trousers in sand-coloured stretch cotton (Cotton 008)
- 06** Low-top sneakers in white fine calf leather (SNE07)



The benefits of technical: *Transitional outerwear*

From versatile vests, trousers and smart-casual informal jackets to high-performance coats: we love hybrid outerwear for its **effortless layering options** *and* **sophisticated protection from the elements**.

Browse the next few pages for a peek at our favourite technical outerwear pieces for the transitional months, whether you're looking for something **formal, casual or perfectly in between**.





Technical coat

Perfect for mild yet unpredictable weather, the technical coat is defined by its classic design and durable wind- and water-repellent fabric, which **also wicks away moisture from the inside out**.

Pictured here in frost grey with slanted welt side pockets and a five-button closure, this lightweight coat is ideal for layering over a summer knit and technical trousers, whether to the office or in your free time.

OC0103



Two-way zip vest

Similar to the quilted vest but **thinner and therefore even more versatile during the hottest months**, the two-way zip vest is cherished for more than just its athleisure aesthetic. It's also super practical: easy on, easy off.

When crafted from a technical fabric, this vest can fold neatly into your bag as a portable windbreaker or quick rain gear – for example, in this sleek, water-repellent taupe.

OC0087

Utility jacket

A modern favourite, the technical utility jacket **combines urban style with high-performance protection**. Crafted here from Loro Piana's popular Italian-made **Storm System®** fabric, this navy wool excels in its breathable wind and water repellence – with a RAF blue contrast interior for a fun twist.

Finished here with a zip and snap-button closure, bellow side pockets, one flap chest pocket and an adjustable elastic cord, boosting its functionality and sartorial flair.

OC0015



New colours:

365 stretch water-repellent tech

Customise your trousers

Previously available only in navy and black, we've expanded this quality to include the versatile colours of forest green, steel grey, light grey and bone.

Made from advanced water-repellent technical fibres infused with an impressive 17% elastane, this quality offers **exceptional stretch** while keeping you **dry and comfortable**, even in wet or suboptimal conditions. Moreover, its soft feel and pleasant weight make it a **year-round favourite**, while its wrinkle resistance and breathability make it **ideal for travel**.



The best legwear this spring and summer

Spring and summer aren't just for shorts
(though our favourites include the standout Bermuda style).

Especially for trousers, **it's all about a smart combination of fabric and design options.**
Read on to scope our top three recommendations for the coming season – all lightweight,
breathable and naturally cool.



LIN002

Linen drawstring trousers

The breathable, breezy benefits of linen combine with the comfortable fit of the drawstring style to bring you easy-going elegance all day long. Perfect for summer days that call for relaxed sophistication.



Cotton 008

Versatile cotton

Whatever the style and design options, your **stretch cotton twill trousers** are bound to be breathable and sharp, thanks in part to their versatile four-season weight. A truly unmissable staple in your spring and summer wardrobe.



SEER006

Seersucker Bermudas

Undeniably the most classic summer fabric thanks to its unique 'waffle weave', your cotton seersuckers achieve maximum coolness in the casual Bermuda style (available in Regular and all Slim fits).



EVE050

New design option: Extended high waistband with 2-button closure

Customise your trousers

Inspired by traditional military trousers, your 'high waistband with extension' design option can now be made with a 2-button closure – **enhancing the look while also providing a secure, comfortable fit.**

Live in April 2025.

SS25 ties

Seasonal accents

The right tie will take your summer ensemble from 'just another outfit' to pinnacle of sophistication. That's surely the case for any of these **19 seasonal additions, each selected in softer colours to complement your SS25 suits and jackets**. Including plenty of options for weddings and other formal occasions, you'll find:

One twill in pure silk: printed with a pattern of small white and blue sailboats, providing a formal yet playful twist.

Two grenadines in pure silk: in one light blue and one beige, both with white stripes and a lustrous sheen – for easy transitions from business to formal settings.

Seven jacquards in pure silk: in a variety of neutral colours and designs, from small flowers to paisleys and dots, plus one dark blue with textural *ton-sur-ton* stripes. Also ideal for weddings.

Four basketweaves in silk and linen: featuring a classic texture in soft shades of light blue, taupe, green and ivory. Also ideal for weddings.

Two jacquards in silk and linen: an organic and radiant blend in small woven florals, including one light blue with white and one dark green with dark blue. Also ideal for weddings.

Three jacquards in silk and cotton: hitting the sweet spot between professional and characteristic, in two stripes and one tobacco-coloured floral weave.



SS25

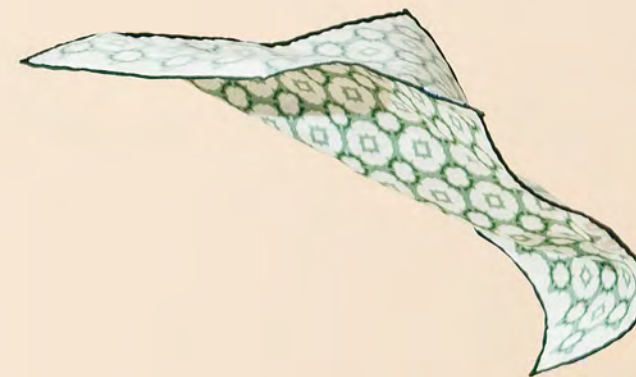
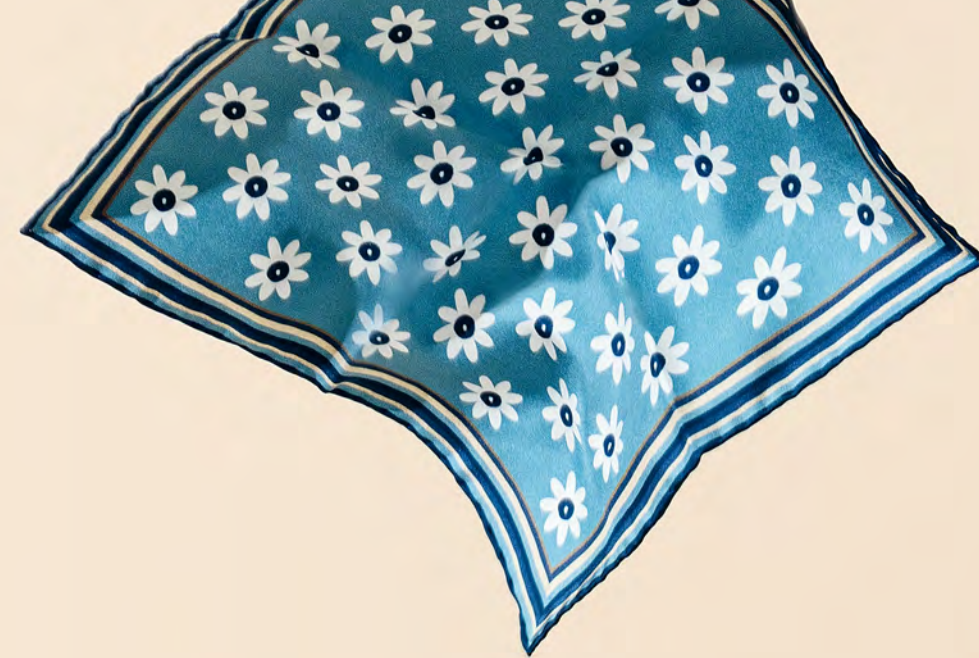
pocket squares

The finishing touch

Add a splash of summer style to your ensemble with any of your new seasonal pocket squares, selected for SS25 in a range of **10 vibrant prints** with complementary edging. Get ready for:

Five printed twills in pure silk: inspired by the 70s in various graphic designs, including retro flowers, fish, ships in glass bottles, and overlapping circles – each with an elegant and sophisticated allure.

Five printed herringbones in linen and silk: inspired by geometric ceramic tiles and characterised by their cool pastel colours and earthy, lightweight feel. Especially ideal for weddings in the off-white with taupe and off-white with light blue small chain design.



Summer wedding

Redefining tradition

In 2025, we fully expect the world's grooms and groomsmen to continue redefining tradition: adding personality and vibrancy by **embracing a wider colour palette for suits** – for example, in soft pastels, earth tones, bold shades and vibrant patterns.

Footwear is also changing, expanding from only black and brown Oxfords to include loafers, brogues and even sophisticated sports shoes in a range of interesting colours. And **customisation is clearly key** (think monograms, mother-of-pearl buttons and fancy linings).



Earth tones

Whether you're tying the knot on the beach or in a garden setting, a warm earthy colour palette is the perfect match for an outdoor ceremony.

Crafted from a **luxurious 'Summertime' wool-silk-linen** fabric made in Italy by Loro Piana, this beige three-piece suit features a 2-button closure, notch lapels and straight jet side pockets. Ceremony-ready with a white cotton fine twill shirt and matching pocket square, seasonal tie in champagne linen and silk, and elegant penny loafers in taupe suede.



2-button jacket: EVE059
Waistcoat: EVE059
Shirt: SH00119
Tie: TWD007
Pocket square: SH00119
Trousers: EVE059
Shoes: SDE06

Available in a wide range of qualities, including our bestselling wool-linen blends.

EVE049, EVE059 & EVE047



Give your celebratory look an extra-modern edge with a seasonal pair of loafers, pictured here in taupe suede.

Tie: TWD007
Pocket square: SH00119
Shoes: SDE06

Fresh & crisp

Fresh hues like off-white and pistachio bring a vibrant touch to any summer wedding. Bonus: the lighter the shade, the more it reflects the sun's heat.

Crafted from your **seasonal sage-green blend of wool, silk and linen**, this two-piece suit showcases a 2.5-button closure and patch side pockets for a chic yet modern twist. Ready for the altar with a white shirt and matching pocket square in breathable cotton and linen, a classic wedding tie in champagne-coloured pure silk and plain-toe loafers in chocolate brown summer suede.



2.5 button jacket: 5985
Shirt: SH00371
Tie: TWD001
Pocket square: SH00371
Trousers: 5985
Shoes: SUS03

Two outstanding choices:
your SS25 ivory S130 Solaro
herringbone and 365 laurel green
stretch wool-silk-linen blend.

5967 & EVE052



Fan of a minimalist style? Opt for
your plain-toe loafers, pictured
here in chocolate brown suede.

Tie: TWD001
Pocket square: SH00371
Shoes: SUS03

Blues

Inspired by the sea and sky, cool blues always bring a sense of serene elegance, lending both the groom and his wedding party an effortless charm.

One of our bestsellers for weddings, this sky blue three-piece suit features a sleek 1-button closure, peak lapels, straight jet side pockets and a special *spalla camicia* shoulder. Made from a **breathable stretch blend of wool and linen**, thoughtfully styled with a white cotton fine twill shirt and matching pocket square, an off-white grenadine tie and chocolate brown loafers.



1-button jacket: EVE051
Waistcoat: EVE051
Shirt: SH00119
Tie: TGREN012
Pocket square: SH00119
Trousers: EVE051
Shoes: SDE09

From a fancy jacquard lining to peak lapels and a *spalla camicia* shoulder: this is your time to shine with distinctive design options.

EVE051, EVE050 & EVE045



Complement your blue ensemble with a brown shoe or opt for a tonal look in, for example, this midnight blue suede.

Tie: TGREN012
Pocket square: SH00119
Shoes: SDE09

Classic

A dinner jacket with tuxedo trousers will never go out of style, whether in our bestselling wool-mohair blend, bamboo basketweaves or even a cool linen.

Made from **pure, more eco-friendly bamboo**, this off-white dinner jacket brings a hint of old Hollywood charm with its 1-button closure, straight jet side pockets and dapper shawl lapels. Poised for the big day with a white cotton pinpoint tuxedo shirt and matching pocket square, navy tropical wool-mohair tuxedo trousers, a midnight blue satin bow tie and midnight blue velvet plain-toe loafers.



1-button jacket: EVE012
Tuxedo shirt: SH00231
Bow tie: TSAT002
Pocket square: SH00231
Tuxedo trousers: TUX004
Shoes: VELV002

Our ceremonial bunch features a wide array of choices for tuxedos and dinner jackets, all lined up for an easy selection process.



Thoughtfully chosen accessories are key to elevating your wedding look – and to making a lasting impression.

Bow tie: TSAT002
Pocket square: SH00231
Shoes: VELV002

Make it personal

Personal touches like a fancy lining, a monogram on your shirt, tie or jacket (lining or undercollar) and/or sartorial details such as mother-of-pearl buttons and Milanese buttonholes **help make your wedding attire truly one of a kind.**

Monogram ideas include your names, initials, wedding date or even a short personal message.



SH00103



TSAT005



EVE012 & Jacquard 8498

Custom shoes

Just as important as your choice of clothes, **your footwear also defines your summer style** – both in terms of comfort and aesthetics. Use the following pages to get up to speed on (y)our latest shoe developments *and* to inspire your loafer picks for the season ahead.



Seasonal favourites: Loafers

Five styles

Loafer season has returned! And that's a win, as **their simplicity never fails to charm**: they're arguably the easiest shoe to slip on and they pair well with almost any outfit.

Plus, loafers can be **dressed up or down** depending on your ensemble. Looking for design inspiration? Read on to scope five chic summer-ready possibilities.



SDE07

The penny loafer

Perhaps **the most classic loafer style**, crafted here with Blake lightweight soles for a summer-ready feel and extra-casual look. Pictured in sand suede, for easy pairing with colours ranging from dark brown to bright neutrals.



SUS03

2. The plain-toe loafer

A **minimalist style** free of extra seams and details. Crafted here with Blake Flex soles for a sturdier look while in fact being just as lightweight and flexible as the 'regular' Flex (see #5). Pictured in chocolate brown summer suede.



SDE06

3. The lightweight tassel loafer

A style with **plenty of old-school charm**, crafted here with lightweight soles for extra grip and a modern, casual look. Pictured in taupe suede, to match nearly every summer outfit and occasion.



SUS06

The city loafer

The most casual of all styles, city loafers verge on the aesthetic of slip-ons without losing their loafer charm. Pictured in sand summer suede, this style stands out for its easy adaptability to both laid-back and formal summer looks.



SUS03

The Flex tassel loafer

With its iconic tassel detail, this pair has been crafted with our durable Flex soles, offering **a modern look with a feel adjacent to slippers**: ultra-thin, flexible and sleek. Pictured in chocolate brown summer suede.



What to pack for your summer getaways

Summer is perfect for exploring new destinations and creating unforgettable memories.

Whether you're heading to a city, golf resort, business event or destination wedding, **packing the right essentials can make all the difference.** Check the following pages for tips on what to pack for every type of summer getaway.



A city trip

On an urban getaway, you'll likely be moving between shops, museums, parks and restaurants. To keep your suitcase light yet versatile, you'll want to **pack essentials like lightweight knits, jeans and a technical utility jacket for unexpected rain** – all of which easily transition from warm days to cool nights.

Utility jacket: OC0103
T-shirt knit: K10125
Jeans: WAS014
Shoes: SUS06



A golf resort

Keep it classic on the green with **moisture-wicking polos** in neutral colours like white, light blue and grey. Pair those with some **breathable knits, technical stretch trousers and cotton shorts**, plus a vest and/or windbreaker for the occasional shower or breeze. Add your favourite sneakers and you're ready to tee off.

Polo knit: K10152
Bermudas: LIN002
Shoes: SNE07



Business event

For business travel, opt for a breathable cotton shirt with tropical wool trousers or lightweight chinos in fine cotton twill. **Loafers and an informal jacket or blazer will keep you sharp** when you need to dress up, but be prepared with a few soft knits for those less formal moments.

Utility jacket: BL0038
Two-way zip vest: BL0038
Shirt: SH00157
Chinos: COG006
Shoes: SUS10



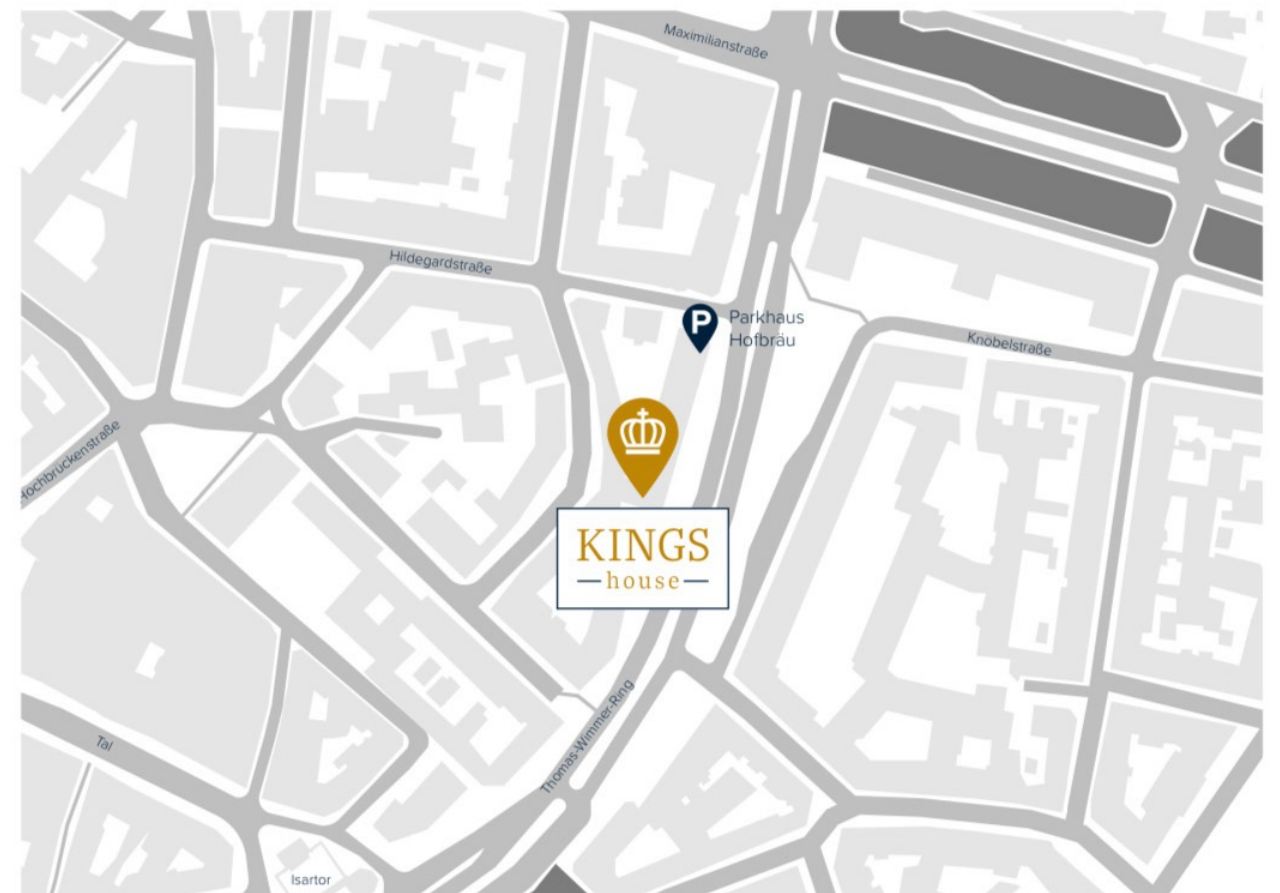
Destination wedding

Heading to a beach or tropical wedding? Hit the sand with a linen, linen-blend or cotton suit in timeless off-white, beige, green or blue. Pair it with a neutral button-up in lightweight natural fibres and feel free to skip the tie – **a pocket square and loafers are all you need to complete the look.**

2-button jacket: Cotton 008
Shirt: SH00376
Pocket square: PS602
Trousers: Cotton 008
Shoes: SUS03

KingsHouse GmbH | Thomas-Wimmer-Ring 11 | 80539 München
T: +49 (0) 171 99 66 123 | www.kingshouse.de | E: info@kingshouse.de

KINGS
—house—



**Jetzt Termin
vereinbaren!**

KINGS
—house—