



# Spring & Summer 2026

The new collection

**Wedding season 2026**  
*Expanded ceremonial wear collection*

**Formal footwear elevated**  
*Renewed for better fit, comfort & faster delivery*

**Your new summer knit staple**  
*Crafted in Pima cotton*

**Inspiration area**  
*Refreshed seasonal and wedding looks*

# Contents

09

## Essential pieces

A curated foundation of timeless garments built for everyday refinement.

13

## Wedding season 2026

Elevated ceremony looks crafted for unforgettable moments.



23

## All-Season Flex Collection

Year-round comfort and sophistication through innovative, Italian-made stretch fabrics.



35

## Knitwear

Lightweight textures and new yarn qualities redefining summer versatility.



41

## Summer knits

Knitted textures meet warm-weather ease in tonal summer looks.



45

## SS26 jackets & suits

Distinctive fabrics and refined constructions designed for warm-weather polish.



79

## New for trousers

Updated details and new pleat options enhancing modern elegance.



85

## 365 & 365-seasonal shirts

Daily essentials refined with seasonal fabrics and elevated finishing.

91

## SS26 ties & pocket squares

Fresh patterns and textures to complete the season's tailored looks.





# Welcome to the *Spring/Summer 2026 season*



All-Season Flex inlay



Informal jacket with Nehru collar ASF012

Spring/Summer 2026 marks a season of ease in motion – an evolution of menswear shaped by breathable fabrics, natural stretch and the quiet confidence of lighter, looser silhouettes. **This collection traces a deliberate arc: breaking away from tradition just long enough to rediscover why it mattered in the first place.** Refined patterns, airy textures and a fresh spectrum of colours bring renewed clarity to warm-weather dressing, while craftsmanship remains firmly rooted in the world's most esteemed mills.



Get ready for wedding season



Refined linen blend fabric qualities



One-piece collar polo

Italian excellence throughout: suits crafted from Summertime and Jersely qualities, linen blends and pure silk (p. 47), while jackets gain new depth with herringbone from Ferla and Softime fabrics made in Italy by Loro Piana (p. 45). Shirts evolve to meet the moment with Yoga natural-stretch cottons by Albini, cotton-linen chambray, seersucker and washed cotton denim (p. 85).

Informal jackets also evolve this season with new design options that bring versatility to relaxed tailoring. **The Nehru jacket debuts with a clean standing collar that fastens neatly with a single button (p. 07)**, offering a refined, contemporary silhouette. Additional pocket styles – including patch pockets with flaps, utility patch pockets with flaps and a patch pocket with inverted pleat and flap (p. 08) – introduce functional detail while maintaining an elevated, understated aesthetic.

In knitwear, **ultra-fine Pima cotton yarns** and a new **organic cotton–silk blend** offer smoothness, breathability and a soft, luxurious sheen (p. 36). New design options include **one-piece collar polos with shirt-cuff knits (p. 39)**. The new relaxed **leisure shorts** make an ideal wardrobe staple for the warmer months (p. 38).



Runners



Hand-painted nubuck tassel loafers



Ultra-fine Pima cotton yarn quality



# Essential pieces: for the considered man

## *Informal Nehru jacket*

**Look LIN002** Sand linen plain weave suit -  
SH00312 Olive green linen shirt - BXC01 Dark  
brown box calf penny loafers (*Made in Portugal*)



The sand linen plain weave suit (LIN002) brings a refined, **utility-inspired** approach to summer tailoring. The jacket **features a 5-button closure and a clean Nehru collar** that gives the silhouette a modern, composed character.



A refined take on relaxed tailoring. The **taupe linen plain weave informal jacket (LINS002)** with a **2.5-button closure**, features the clean, neckline of the **Nehru style**, giving the look modern character, while the side-seam pockets enhance its easy, functional feel.



**Look LINS002** Taupe linen plain weave informal  
Nehru jacket - K10239 Ecru cotton crew neck -  
WAS025 Ecru stretch jeans - SDE14 Light taupe  
suede slip-on sneakers (*Made in Portugal*)



## *Informal Nehru jacket*



# Wedding season 2026

## Refined ease for life's most memorable moments

The new season brings a fresh perspective to wedding style – one that celebrates ease, texture and personality.

Formal wear becomes lighter, softer and more expressive, moving away from rigid ceremony and towards effortless sophistication. Tailoring is relaxed yet refined, defined by unstructured silhouettes and breathable fabrics that move naturally with the wearer.

A warmer palette takes centre stage, with earthy tones, soft neutrals and deep, saturated hues like rust pink, butter yellow and terracotta offering a contemporary alternative to traditional navy and grey. Innovative blends of wool, linen and silk add depth and tactile richness, elevating every look with understated luxury.

SS26 is all about balance: relaxed yet elegant, personal yet timeless. A celebration of craft, comfort and individuality – made for life's most memorable moments.



### New colours: linen blends

This season, we're expanding our collection with new colours in **two refined linen blend qualities – ideal for tropical settings and destination weddings**, yet just as fitting for more relaxed, casual suits. Lightweight, breathable and full of natural texture, these fabrics bring a sophisticated ease to any summer wardrobe.

**LP linen blend fabrics** from the Summertime collection are crafted in Italy by Loro Piana, these luxurious linen blends combine wool, silk and linen with a hint of natural stretch for ease and comfort. Lightweight, breathable and effortlessly refined – ideal for tropical settings and destination weddings alike. This season, the collection expands with nine new, sun-drenched colours.

**Linen blend** fabrics are woven from a refined mix of linen, wool and silk. This quality embraces a more responsible approach with the use of recycled materials. Naturally breathable with a soft, tactile feel – perfect for warmer days and relaxed summer occasions. This season, four new colours join the collection, offering fresh options for effortless elegance.

### The Ceremonial Wear folder





# Elegant wedding style



**Look 6076** (LP - SU) Neapolitan blue mélange tropical wool-silk-linen suit - SH00144 White cotton dobby shirt - TGREN012 Off white grenadine tie - EVE015 Ivory wool blend dotted pocket square - SUS06 Summer suede sand plain toe loafers *(Made in Italy)*



## Two refined expressions of modern wedding style.

One in a Neapolitan blue mélange tropical wool-silk-linen suit with subtle texture, the other in a mint green stretch tropical wool-linen 3-piece suit for a fresh, contemporary touch. Together, they showcase elegant colour and lightness for the occasion.



**Look 6079** Mint green stretch tropical wool-linen blend 3-piece suit - SH00144 White cotton dobby shirt - TGREN022 Light turquoise-white grenadine tie - POA06 Green polished antique tassel loafers *(Made in Italy)*



A pair of distinctive wedding looks,  
each with its own character.

The ecru mélange tropical wool-silk-linen 3-piece suit delivers a clean, radiant elegance, while the terracotta mélange tropical wool-silk-linen suit introduces a richer, more expressive warmth. Together, they present a versatile spectrum of modern ceremonial style.



**Look 6055** (LP - SU) Ecru mélange tropical wool-silk-linen 3-piece suit - SH00144 White cotton dobby shirt - TGREN012 Off white grenadine tie - PSILK028 White silk pocket square - SDE14 L.taupe suede plain toe loafers (*Made in Portugal*)

Refined looks for  
the big day



**Look 6070** (LP - SU) Terracotta mélange tropical wool-silk-linen suit - SH00144 White cotton dobby shirt - TWD013 Platinum herringbone linen-silk tie - PSILK029 Off white silk pocket square - SDE15 Taupe suede plain toe loafers (*Made in Portugal*)





# Formal evening looks



**Look EVE012** Off-white bamboo dinner jacket - SH00103 Ivory compact cotton poplin tuxedo shirt - REV013 Black S150 wool trousers - TSAT003 Black satin bow tie - SDE01 Black suede plain toe loafers *(Made in Italy)*



## A study in classic evening elegance.

The black tropical wool-mohair tuxedo offers sharp, timeless formality, while the off-white bamboo dinner jacket brings a softer, contemporary sophistication. Together, they showcase two refined directions for modern black-tie style.



**Look TUX006** Black tropical wool-mohair tuxedo - SH00144 White cotton dobby tuxedo shirt - TSAT003 Black satin bow tie - VELV001 black velvet plain toe loafers *(Made in Italy)*





# The *All-Season Flex* Collection

This season we continue to build on the All-Season Flex Collection, designed for maximum impact with minimal effort and presented in its own easy-to-use folder.

Built on the principles of comfort, versatility and effortless sophistication, the collection brings together timeless classics that can be worn year-round.

ASF039, SH00376 & LIN002



### New qualities: LP S170 stretch & LP basket stretch

To expand this story, we are introducing two new fabric qualities made in Italy by Loro Piana that take flexibility and refinement to the next level.

**The S170 Stretch** from the Super 170's Wish® collection emphasises pure elegance, with a remarkably fine touch, fluid drape and natural stretch that follows the body's movement.

**The Basket Stretch** from the Jersely line pairs a soft, flexible feel with the appearance of a refined woven fabric, offering lightness and ease for relaxed jackets and vests.

Together, they present a modern balance of sophistication and comfort, designed for thoughtful dressing.

### *The All-Season Flex* folder & inspiration cards







## LP S170 Stretch

From the Super 170's Wish® line of **fabrics made in Italy by Loro Piana** offers an unparalleled **softness and elegant drape**, matched with exceptional breathability and flexibility. Available in five colours.



## Look ASF034

*LP S170 Stretch*

A modern monochromatic approach with a refined edge. The storm grey S170 wool trousers pair seamlessly with the matching crew neck knit, creating a clean and elevated base with subtle texture. Layered over it, the silver grey mélange utility jacket introduces a relaxed, contemporary contrast, while keeping the palette soft and cohesive. Finished with mid grey suede low-top sneakers for a casual touch in the same tonal family, the look balances tailored precision with everyday ease.



**Look ASF034** (LP - WI) Storm grey S170 wool utility jacket - K10237 Silver grey mélange cotton crew neck knit - ASF034 (LP - WI) Storm grey S170 wool trousers - SDE29 Mid grey suede low-top sneakers *(Made in Portugal)*



## Look ASF033

*LP S170 Stretch*

A refined tonal look with a soft, elevated presence. The oatmeal S170 wool jacket creates a clean, luxurious base, its lightweight construction offering a smooth, composed drape. Paired with a white cotton-linen shirt it adds a crisp, breathable layer, complemented by the white linen pocket square with mid-brown hand-stitching for a touch of artisanal detail. Finished with chocolate brown summer suede tassel loafers, the look balances polished tailoring with relaxed seasonal ease.

**Look ASF033** (LP - WI) Oatmeal S170 wool jacket - SH00371 White 2-ply cotton-linen shirt - PLIN007 White linen mid brown handstitched pocket square - ASF033 (LP - WI) Oatmeal S170 wool trousers - SUS03 Chocolate brown summer suede tassel loafers *(Made in Italy)*







## LP Basket Stretch

From the **Jersely** line of **fabrics made in Italy by Loro Piana**, this quality combines the supple ease of jersey with the refinement of a woven fabric: **light, breathable and resilient**, available exclusively for jackets and vests in five colours.



## Look ASF038

*LP Basket Stretch*

A refined take on relaxed summer tailoring. The sand wool-silk-linen safari jacket brings a softly textured, natural finish, layered over a cashmere-silk polo knit in the same warm tone for a cohesive, understated look. The sand linen drawstring trousers add ease and lightness, enhancing the breathable, effortless feel of the outfit. Finished with chocolate brown summer suede plain-toe loafers for a grounded contrast, the result is elegant, relaxed and thoughtfully composed for warmer days.



**Look ASF038** (LP - JY) Sand stretch wool-silk-linen basketweave safari jacket - K10085 Sand cashmere-silk polo knit - LIN002 Sand linen drawstring trousers - SDE15 Taupe suede plain toe loafers (*Made in Portugal*)



## Look ASF039

*LP Basket Stretch*

A relaxed, textured take on refined seasonal dressing. The light brown stretch wool-silk-linen basketweave safari jacket sets the tone with its soft structure and understated utility character. Layered underneath, the off-white ultra-fine merino crew neck knit adds a clean, lightweight contrast. The taupe stretch wool-silk hopsack trousers pair effortlessly with the palette, offering a smooth, balanced silhouette with subtle texture. Finished with taupe suede penny loafers, the look brings together tonal harmony, tactile richness and an easy sense of sophistication.

**Look ASF039** (LP - JY) Light brown stretch wool-silk-linen basketweave safari jacket - K10168 Off-white ultra-fine merino crew neck knit - ASF007 (LP - LM) taupe stretch wool-silk hopsack Trousers - SDE15 Taupe suede penny loafers (*Made in Italy*)





# All-Season Flex Collection: *highlights for summer*

Alongside these new developments, the All-Season Flex Collection continues to feature a wide range of flexible fabrics made to move effortlessly through every season. Among these, several standout summer qualities remain at the heart of the collection, capturing its spirit of lightness and performance.

## *Look ASF001*

*LP Tropical Stretch*

**Look ASF001** (LP - JY) Ecru stretch tropical wool suit - SH00270 White compact 2-ply cotton fine royal Oxford shirt - TWD015 Gold linen-silk herringbone tie - NUB01 Bordeaux nubuck painted tassel loafers *(Made in Portugal)*



## *Look ASF008*

*LP Lightweight Stretch*

**Look ASF008** (LP - LM) Smoke grey stretch wool-silk hopsack trousers - K10194 Greige mélange extra-fine merino half-zip knit - SH00432 White natural stretch stretch cotton Oxford shirt - SDE14 Light taupe suede low-top city loafers *(Made in Portugal)*





Look ASF012

LP Stretch

Look ASF012 (LP - JY) Indigo stretch wool-silk-linen informal Nehru jacket - K10158 Light slate blue ultra-fine merino polo knit - DEN006 White selvedge stretch jeans - SDE29 Mid grey suede runners (Made in Portugal)



Look OLM005

Technical Stretch

Look OLM005 Greige stretch water-repellent technical vest with zip -K10148 Navy blue cotton-silk full-zip cardigan - OLM005 Greige stretch water-repellent technical drawstring trousers - KNI01 Off-white knit runners (Made in Portugal)





# Essential pieces: for the considered man

## Business blazer

**Look ASF042** (LP - JY) Midnight blue stretch wool-silk-linen basketweave jacket - SH00432  
White natural stretch cotton oxford shirt - ASF001 (LP - JY) Ecru stretch tropical wool plain weave trousers - TS842 cobalt-ivory cotton-silk basketweave with ivory stripe tie - BXC01 Dark brown box calf penny loafers *(Made in Portugal)*



An elevated take on informal tailoring. This jacket features a **refined 2.5-button closure paired with a clean Nehru collar** for a modern, streamlined impression. The lapels are folded to create a subtle business look, adding structure while keeping the overall feel relaxed. Crafted from a **midnight blue stretch wool-silk-linen basketweave (ASF042)**.



The **indigo stretch wool-silk-linen twill Nehru utility jacket** blends refined style with practical design. The **Nehru collar** give it a sharp, structured look, while the **5-button closure** and utility pockets add relaxed functionality.



## Informal Nehru jacket

**Look ASF012** (LP - JY) Indigo stretch wool-silk-linen twill Nehru utility jacket - SH00169 L.blue washed cotton denim twill shirt - Cotton 027 Off-white cotton stretch twill trousers - SDE26 Midnight blue suede mid-top city loafers *(Made in Portugal)*



# From yarn to finish: *the latest in knitwear*

As the days grow lighter, so does the way we dress. This season celebrates the effortless elegance of knitwear designed for warmer days – pieces that breathe, move and feel as refined as they look.

From ultra-fine Pima cottons spun for a cool touch to cotton and silk blends with a subtle luxe sheen and lightweight drape, each new addition redefines comfort through craftsmanship. Whether worn as a standalone piece or as a light layer, summer knitwear becomes a statement of quiet sophistication – relaxed, modern and endlessly versatile.



K10148 & LIN003

## New yarn quality: **Pima cotton**

A yarn crafted from long-staple Pima cotton fibers sourced in the USA, chosen for their smoothness, softness and remarkable durability.

**Spun into ultra-fine yarns, the result is a fabric that offers natural breathability, feels cool to the touch,** and is finished with a subtle matte elegance. Thanks to the quality of the long-staple Pima cotton, this knit also offers **crease-resistance and long-lasting performance** comparable to wool, making it a reliable and enduring choice for everyday wear.

Perfect for spring, summer and autumn, cotton is an effortless choice for everyday comfort. It's an exceptional option for crew necks, polos or zip-closure styles — with single yarn ideal for warm summer days, and double yarn providing the perfect weight for in-between seasons.



KS10251 & K10240



KS10244



K10243

**Available in fifteen 365 and eight 365 seasonal colours** – offered in single yarn and double yarn.



K10238 & K10231



K10253, K10243 & K10237



# Summer knits



Knitted textures meet warm-weather ease in these **tonal summer looks**.

Each outfit pairs lightweight knitwear with relaxed shorts for a casual, refined feel that stays comfortable in the heat. Soft, breathable and understated – ideal for everyday summer dressing.



**Look K10239** Ecru cotton polo knit - K10239 Ecru cotton leisure shorts - KNI01 Off-white runners (Made in Portugal)



**Look KS10250** Rusty red cotton polo knit - KS10250 Rusty red cotton leisure shorts - SDE14 L. taupe suede runners (Made in Portugal)





# Essential pieces: for the considered man

## Leisure shorts

**Look K10237** Silver grey *mélange* cotton leisure shorts - K10234 Midnight blue T-shirt knit - SDE26  
Midnight blue suede runners (*Made in Portugal*)



Laid-back ease with a clean finish. The **silver grey *mélange* cotton leisure shorts (K10237)** offer soft comfort and a relaxed silhouette with a refined knitted texture. Ideal for warm days, effortless off-duty looks or casual summer styling.



Relaxed ease with a refined touch. The **midnight blue cotton leisure shorts (K10234)** offer a soft and breathable feel. A clean silhouette and comfortable waistband make them ideal for warm days. Pair with a simple knit tee for effortless style.



**Look K10234** Midnight blue cotton T-shirt knit – K10234 Midnight blue cotton leisure shorts – KNI05  
Jeans knitted runners (*Made in Portugal*)

## Leisure shorts



# Spring & Summer jackets

Our new jacket collection balances refinement with ease, crafted in luxurious blends of wool, silk and linen. Expect a mix of solids and subtle patterns – never too bold, always sophisticated.

Highlights include a beautiful herringbone from Ferla and Softime fabrics from Loro Piana, alongside a refined linen, wool, silk stretch quality by Ermenegildo Zegna that elevates the selection even further. The palette mirrors the season's trends: mauve pink, petrol, sage green, light blues, and sand – modern shades that refresh the classics without overpowering them. With **24 seasonal fabrics** to choose from, this collection offers the perfect canvas for a jacket that feels both contemporary and timeless.



9190 (Silk Houndstooth)

**Silk Houndstooth**, crafted from pure silk, combines luxury with a sporty countryside character. These fabrics are the perfect companion for elevated casual wear that does not compromise on refinement, offering a distinctive look with a smooth and sophisticated feel.



9194, 9188, 9191 & 9196 (Softime)



9187 & 9190 (Silk Houndstooth)

**Softime blends** wool, cotton, silk and linen into a fabric of remarkable softness and sophistication. The combination of cotton and silk lends an exceptional lustre and

a textured surface that catches the light with subtle depth. Elegant yet informal, it is available in fresh colours with a refined glencheck and windowpane design, making it an inspired choice for modern wardrobes that value comfort and character.



9196 (Softime)

**Jersely**, from the Jersely line made in Italy by Loro Piana, unites the supple effect of jersey with the refined properties of a woven fabric. Crafted from the finest pure wool, it is breathable, resilient and comfortable, offering a polished look with natural ease.



9203



9207, 9206 & 9208 (Jersely Basketweave)

**Jersely Basketweave** introduces a unique expression within the Jersely line made in Italy by Loro Piana. Woven from a blend of wool, cotton, silk and linen, it brings together softness, resilience and breathability with the added character of a basketweave structure. The result is a fabric that feels relaxed yet sophisticated, offering subtle texture for an effortlessly elevated wardrobe.



9197, 9193, 9189 & 9185 (Wool, Silk & Linen)

**Wool, Silk & Linen** brings together the best of natural fibres in a fabric that feels lightweight and breathable. Defined by its subtle texture and crisp handfeel, it offers a refined balance of comfort and character, perfect for the season ahead.



9185 (Wool, Silk & Linen)

**Linen Wool Silk Stretch** is a versatile fabric with a relaxed character that showcases the natural texture and visual richness of linen. Crafted by Ermenegildo Zegna, it undergoes an overdyed process that enhances its tridimensional effect, creating depth and subtle variation in colour. Lightweight and soft with a natural elastic drape, it is the go-to choice for effortlessly elegant garments with a casual ease.



9183 & 9201 (Linen Wool Silk Stretch)



9178, 9179, 9177 & 9180 (Soft Neutrals)

**Soft Neutrals** brings together a selection of fabrics united by their refined palette of natural tones. Distinguished by patterns such as herringbone, houndstooth, glencheck and windowpane, this group balances elegance with ease. Perfect for a smart-casual wardrobe, the fabrics offer versatile options that feel contemporary while remaining timeless.



9181 (Wool, Silk & Linen)



# Spring & Summer suits

This season brings a fresh spectrum of colour and texture. Think mauve pink, petrol, sage green, light blues, sand and amber haze – tones that feel modern, effortless and distinctly of the moment.

Among the highlights is Silk Skin from Ermenegildo Zegna – a 100% silk fabric with a peach-skin finish that delivers an exceptionally soft touch and a refined, understated lustre, alongside a linen-cotton blend from Ferla adds lightness, breathable ease and a naturally refined texture. The collection also includes a range of fabrics made in Italy by Loro Piana, adding another dimension of artisanal excellence. With **31 seasonal suit fabrics** to choose from, there's no shortage of inspiration for reimagining your suiting wardrobe in the months ahead.

**Summertime**, crafted in Italy by Loro Piana, is a refined fabric designed for modern living. The blend of wool, silk and linen offers natural softness and a fresh contemporary feel. Lightweight and breathable, it brings comfort to warm days while maintaining an elegant drape.

**Linen Way** is an extraordinary combination of linen, wool and silk that unites the natural texture of linen with the softness of wool and the subtle shine of silk. It offers double comfort through a woven bi-stretch version produced without any technical fibres.



6085 (Linen Way)



6055, 6060, 6070, 6073, 6081, 6080, 6062, 6076 & 6087 (Summertime)



6054 (Jersely)

Smooth, breathable and adaptive to the body, it provides ease of movement with a refined drape that elevates any look.

**Jersely** combines performance, comfort and an impeccable look in a fabric designed to adapt to the movements of the body. It unites the supple knitted effect of jersey with the refined properties of classic woven cloth. Crafted from wool with a hint of



6054, 6063 & 6061 (Jersely)

stretch. it is breathable, resilient and flexible, offering lasting comfort with a polished appearance.

**Wool Stretch** is a versatile blend of wool, polyamide and Lycra® that delivers comfort with a refined finish. Crease resistant and easy to care for, it remains breathable and suitable for year-round wear. Ideal for both formal and more casual occasions, this fabric combines practicality with elegance and is available in one sophisticated beige shade.



6065 (Wool Stretch)

**Glencheck** brings a timeless pattern to modern tailoring in lightweight, breathable fabrics. Whether pure wool or a refined blend of wool, silk and linen, each cloth offers natural comfort with an elegant drape. Versatile and contemporary, these fabrics are ideal for both work and everyday wear, adding subtle character to any wardrobe.



6064, 6078 & 6067 (Glencheck)

**Linen-Cotton Blend** stands out with an exclusive striped design in greige and ivory. The fabric offers a rich, textured aesthetic with enhanced flexibility, making it a contemporary choice for suiting. Combining comfort, character and distinction, it brings a fresh perspective to the modern suit.



6057 (Linen-Cotton blend)

**365 doppio** suit fabrics are specially developed for Munro. This S130 wool uses double twisted yarns to enhance the natural qualities of the fibre. The result is a fabric with a refined drape, a luxurious hand and impressive durability. With a subtle natural stretch and strong crease resistance, it offers reliable comfort and performance throughout all four seasons.



6056 (Soft Silk Twill)

**Soft Silk Twill** is crafted from pure silk with a washed finish that creates a suede-like drape and an exceptionally soft handfeel. Elegant and smooth, it offers both comfort and character, making it suitable for formal occasions or moments of relaxed luxury.

**Solaro**, a refined wool S130 bi-stretch fabric woven in a subtle herringbone, offers lightweight comfort and flexibility for all seasons. With its elegant two-tone effect, it transitions seamlessly from office ready to off-duty refinement, as well as festive events or weddings. A true staple for the modern wardrobe.



6071 & 6088 (Solaro)



# Soft ivory tones

An exploration of light neutrals and refined textures.

These looks embody quiet sophistication. Soft in hue yet rich in detail, they bring a serene and contemporary elegance to modern tailoring.

**Look 9178** Ivory-ecru wool-silk-linen houndstooth jacket - K10168 LP S160 off-white ultra-fine merino polo knit - DR062 L.taupe mélange S130 wool twill trousers - SDE15 Taupe suede penny loafers *(Made in Portugal)*



**Look 9177** Off-white-ecru linen-silk-wool-cotton herringbone jacket - SH00162 White cotton-linen shirt - TLN003 D.taupe stretch wool-linen blend plain weave tie - PLIN001 White linen pocket square - WAS025 Ecru stretch jeans - KNI01 Off-white knit runners *(Made in Portugal)*



# Grounded sophistication

The light taupe wool-silk-linen suit with fine ivory pencil stripes brings a subtle sense of pattern and sophistication, ideal for elevated summer occasions.

The bone mélange linen-wool-silk sharkskin suit offers a softer, textured look with a relaxed yet polished presence. Together, they define a season characterised by gentle neutrals, airy fabrics and quietly confident tailoring – demonstrating how colour contrast can remain subtle yet striking within a refined tailoring palette.

**Look 6059** (LP - PN) L.taupe wool-silk-linen plain weave with pencil stripe suit - SH00162 White cotton-linen shirt - PLIN007 White linen m. brown handsitched pocket square - SDE15 Taupe suede penny loafers *(Made in Portugal)*



**Look 6058** (LP - LW) Bone mélange linen-wool-silk sharkskin suit - K10151 White cotton-silk polo knit - PLIN007 White linen m. brown handsitched pocket square - SDE15 Taupe suede plain toe loafers *(Made in Portugal)*



# Shades of red

A celebration of rich tones and refined textures.

From soft rust pink to deep rusty red, these looks explore the expressive side of menswear colour. Defined by utility-inspired silhouettes and sophisticated layering, they bring depth and warmth to the modern wardrobe.

**Look 9189** Dusty red mélange wool-silk-linen twill utility jacket - 9189 Dusty red mélange wool-silk-linen twill vest with zip - SH00176 White cotton piqué knit shirt - OLM003 Bone stretch water-repellent technical drawstring trousers - SNG07 White sneaker grain calf sneakers (*Made in Portugal*)



**Look 6073** (LP - SU) Rust pink mélange tropical wool-silk-linen utility jacket - K10151 White cotton-silk crew neck - 6073 (LP - SU) Rust pink mélange tropical wool-silk-linen drawstring trousers - SDE06 Taupe suede penny loafers (*Made in Italy*)



# Neutral harmony

Two refined interpretations of modern tailoring in natural tones.

A beige stretch wool-blend twill offers a clean, contemporary base, while a tan-ivory glencheck with a subtle storm-grey windowpane introduces texture and dimension. Together, they strike a balance between structure and softness, creating a look that feels both sophisticated and versatile.

**Look 9188** (LP - STE) Tan-ivory wool-cotton-silk-linen glencheck and storm grey windowpane utility jacket - K10126 Sand cotton-cashmere crew neck - Cotton 008 Sand stretch cotton trousers - SDE18 Tobacco suede plain toe loafers (*Made in Portugal*)



**Look 6065** Beige stretch wool blend twill utility jacket - K10152 Off-white cotton-silk half-zip polo 6065 Beige stretch wool blend twill trousers - SUS03 Chocolate brown summer suede tassel loafers (*Made in Italy*)



# Warm minimalism

An effortless balance between light and warmth.

From the rich depth of a ginger wool-linen tropical blend to the subtle contrast of a light brown & sand wool-linen-silk glencheck, these suits capture the relaxed sophistication of the season. Crafted from lightweight, breathable blends, they offer refined comfort ideal for warmer days and destination settings.

**Look 6069** Ginger stretch tropical wool-linen blend utility jacket - K10084 Off-white cashmere-silk crew neck - 6069 Ginger stretch tropical wool-linen blend trousers - SUS03 Chocolate brown summer suede tassel loafers (*Made in Italy*)



**Look 6067** (LP - SU) L.brown-sand wool-silk-linen glencheck double breasted jacket - K10084 Off-white cashmere-silk crew neck - PLIN007 White linen mid brown handstitched pocket square - 6067 (LP - SU) L.brown-sand wool-silk-linen glencheck trousers - SDE15 Taupe suede penny loafers (*Made in Portugal*)



# Fresh greens

A refined expression of green in its most versatile shades.

Explore texture and depth through natural fibres. Styled with tonal knits, they create a harmonious, contemporary look that feels both confident and understated.

**Look 9194** (LP - STE) Bottle green-off-white wool-cotton-silk-linen glencheck double-breasted jacket - K10172 LP S160 pine green ultra-fine merino crew neck - PLIN013 White linen bottle green handstitched pocket square - COL008 Light sand stretch cotton twill 5-pocket pants - SDE06 Taupe suede bluchers with split toe (*Made in Italy*)



**Look 6080** (LP - SU) D.sage tropical wool-silk-linen suit - K10131 Slate green cotton-cashmere half-zip polo - PLIN013 White linen bottle green handstitched pocket square - SUS05 Taupe summer suede penny loafers (*Made in Italy*)



# Waves of aqua

Explore the blue-green spectrum through subtle contrast and layered texture.

A soft petrol knit in breathable Pima cotton brings an easy, relaxed foundation, while the teal jacket in a wool-silk-linen blend adds depth with its refined weave and natural sheen. Together, they create a harmonious balance of comfort and sophistication, expressed through colour and material.

**Look KS10245** Sea green cotton polo knit - LIN001 White linen plain weave Bermuda - SDE24 Jeans suede slip-on sneakers (*Made in Portugal*)



**Look 9193** Teal mélange wool-silk-linen twill utility jacket - K10168 LP S160 off-white ultra-fine merino crew neck - COG013 Off-white garment-dyed stretch cotton twill 5-pocket pants - SDE12 Natural suede slip-on sneaker (*Made in Portugal*)



# Modern blues

An exploration of blue in its most refined forms.

A denim-blue utility suit in a linen-wool-silk blend offers casual structure with a luxurious touch, while a Neapolitan blue mélange wool-silk-linen jacket adds richness and depth. Together, they reimagine utility through colour, texture and contemporary ease.

**Look 6082** (LP - LW) Denim blue linen-wool-silk sharkskin utility jacket - K10158 LP S160 l.slate blue ultra-fine merino crew neck - SDE25 Navy suede plain toe loafers *(Made in Portugal)*



**Look 9197** Neapolitan blue mélange wool-silk-linen twill utility jacket - K10124 White cotton-cashmere polo - DEN006 White selvedge stretch 5-pocket pants - SDE26 Midnight blue suede sneakers *(Made in Portugal)*



# Patterns in dialogue

A study in refined pattern work.

One look highlights an ivory-oatmeal silk-wool sharkskin utility jacket marked by an oatmeal-sky blue double windowpane. The other showcases a sky blue-ivory wool-cotton-silk-linen glencheck enriched with a soft storm-grey windowpane. Side by side, the patterns reveal their own character and rhythm. One is crisp and spacious, the other intricate and tonal, offering two elevated interpretations of modern checks.

**Look 9180** Ivory-oatmeal silk-wool sharkskin with oatmeal-sky blue double windowpane utility jacket - K10237 Silver grey mélange cotton crew neck - COL001 Off-white stretch twill 5-pocket pants - SDE06 Taupe suede penny loafers (*Made in Italy*)



**Look 9196** (LP - STE) Sky blue-ivory wool-cotton-silk-linen glencheck and storm grey windowpane jacket - K10192 ZB l.blue mélange extra-fine merino polo knit - PLIN002 white linen - light blue handstitched pocket square - COL001 Off-white stretch cotton twill 5-pocket pants - SDE06 Taupe suede blucher with split toe (*Made in Italy*)





SDE20 Suede chocolate brown

Quality: **suede**

Chrome-tanned calfskin leather from Portugal. Featuring a unique water-resistant

finish, our suede is specially crafted for shoes to withstand the wetter months of the year. Choose from a wide range of **23 colours**.



SDE20 Suede chocolate brown

Matching **belt**

Complete the look with a matching belt, crafted in the same materials and colours.

New quality:  
**nubuck hand-painted**

An artisanal highlight: our new nubuck hand-painted leather. Each pair is hand-dyed directly on the last, resulting in a **rich, authentic finish** with natural depth and texture. No two pairs are ever the same.



NUB01 Nubuck hand-painted bordeaux

The meticulous process of layering, drying and finishing makes every shoe a one-of-a-kind expression of craftsmanship. **Offered in five colours: dark brown, chocolate brown, nut brown,**



NUB04, NUB02, NUB03, NUB01 & NUB05

**midnight blue and bordeaux** – each shade brings out a different character in the hand-painted detailing. Because of this careful process, production time is extended by one additional week.





# Casual shoes *for the season*

As we expand our formal range this season, we also turn our attention to the casual side of the collection. These are refined yet relaxed styles that capture the essence of summer dressing. Our runners, sneakers and city loafers all have an improved fit, enhanced comfort and stricter quality control, ensuring every pair feels better, performs better and meets a higher standard.

KNI07 & SNG07



KNI03



SNG07

## Knit runners

The knit material offers a sock-like fit that adapts to the shape of the foot. For this style, leather is chosen as the secondary material to add structure, durability and a refined finish.



KNI07, KNI02 & KNI01

## Leather runners

Choose from a range of materials and colour combinations. Mix and match leather with leather or leather with mesh.



SDE14, SDE12 & SNG07



## City loafers

Hybrid models that seamlessly blend elements of a loafer, dress shoe and casual sneaker. These styles stand out for their easy adaptability to both laid-back and formal summer looks. You can choose from four models: low-top, low-top with laces, mid-top and mid-top with laces.



SDE13, SDE25, SDE24 & SDE12

## Leather options

With a choice of 23 suede, 4 fine calf leather and 5 grain calf leather.

Choose your favourite colour.



SDE11, SDE13, SDE13, SDE17, SDE14, SDE22, SDE24 & SDE29

## Sneakers

Choose from six sneaker models, each offering a clean, modern profile. From low-tops to slip-ons and boat shoe sneakers.



SNG07, SDE27, SDE14, SDE18, SDE24 & SDE25

## Customisation options

To make them your own, nine sole colours are available for personalised styling.



SNG07 boat shoe





# New for trousers

## New design option: pintuck

(Y)our new addition brings back the timeless charm of pintucks — a distinctive style that elevates your ensemble. Think a relaxed, looser fit with pleats. Perfectly paired with formal shoes or loafers, yet just as effortless when worn with a fine knit.



LIN003

## Enhanced button & tab waistband

The button-and-tab waistband has been refined for improved function and comfort. The tab now features a stronger, more supportive construction, ensuring a secure and reliable fit. The result is a functional detail that supports comfort and performs reliably in everyday wear.



LIN003

# Essential pieces: for the considered man *Pintuck trousers*

**Look LIN003** Navy linen plain weave vest with zip  
- K10234 Midnight blue crew neck - LIN003 Navy  
linen plain weave trousers - SDE26 Midnight blue  
suede runners *(Made in Portugal)*



Laid-back tailoring with a refined touch. The **navy linen plain weave pintuck trousers (LIN003)** offer an easy, breathable feel with a sharp, structured front. Ideal for warm-weather days, relaxed office wear or polished casual moments.





# Essential pieces: for the considered man

## Drawstring trousers

**Look OLM005** Greige water-repellent technical stretch fabric drawstring trousers - K10238 White cotton polo knit - SNG07 White grain calf runners (Made in Portugal)



The **greige water-repellent technical stretch (OLM005) trousers** offer a clean, modern ease. Designed with a comfortable **drawstring waistband and pleats**, they balance functional performance with a relaxed, contemporary silhouette.



Laid-back utility with a sharp, sporty feel. The **navy linen plain weave utility jacket (LIN003)** is cut shorter for a more **dynamic and sporty look**, featuring a clean 5-button closure and practical side-seam pockets. Ideal for warm days, effortless layering and casual summer style.



**Look LIN003** Navy linen plain weave utility jacket - K10238 White cotton T-shirt knit - K10234 Midnight blue cotton polo knit - COL024 Light grey stretch cotton twill 5-pocket pants - SNG07 White sneaker grain calf low-top sneakers (Made in Portugal)



## Shortened utility jacket



# Essential pieces: for the considered man

## Denim shirt

**Look SH00445** Indigo blue stretch cotton blend denim twill shirt - COL008 Light sand stretch cotton twill 5-pocket pants - SDE24 Jeans suede slip-on sneakers *(Made in Portugal)*



A refined take on denim shirting, crafted from an indigo blue stretch cotton-blend twill (SH00445). The **heavier weight** of the fabric gives the shirt a relaxed, substantial feel, making it the **ideal choice for a casual shirt**.



Laid-back character with a crisp edge. The **light blue selvedge rigid jeans (WAS015)** bring a fresh, versatile look with classic selvedge detailing. Ideal for everyday wear, relaxed office looks or effortless weekend dressing.



**Look WAS015** Light blue selvedge rigid jeans - SH00162 White cotton-linen shirt - 9201 D. blue stretch linen-wool-silk twill utility jacket - SDE19 Nut brown suede boat shoe sneakers *(Made in Portugal)*

## Selvedge jeans



# 365 & 365-seasonal *shirts*

This season’s shirt collection brings together lightness, comfort and year-round versatility, with **10 365 fabrics and 52 365 seasonal additions.**

From innovative Yoga natural stretch cottons by Albini to airy chambrays, seersuckers and refined seasonal colours, each fabric is designed to move with you and feel effortless in every setting.



SH00435, SH00437, SH00436 & SH00434  
(Yoga stretch cottons by Albini)

**Yoga natural stretch cottons by Albini**  
Crafted with an innovative finish that enhances the fabric’s natural elasticity, these cottons offer exceptional comfort and freedom of movement. This season, the collection expands with two refined weaves: dobby and microstructure, each adding a distinctive texture and depth to the fabric’s elegant, modern appeal. Perfect for effortlessly flexible looks that move with you. Part of our 365 collection, they are designed for year-round wear.



SH00441, SH00444, SH00442, SH00445



SH00436 (Yoga stretch cottons by Albini)

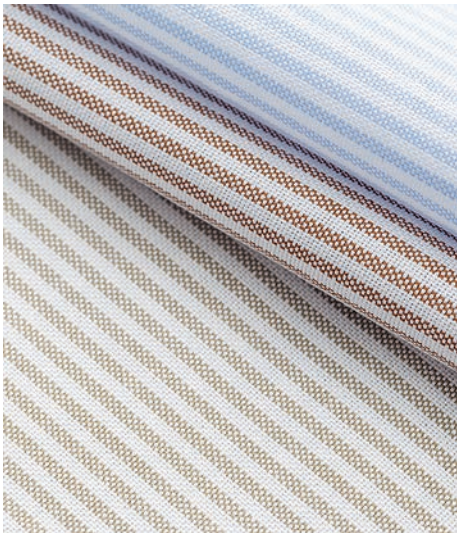


SH00442, SH00441 & SH00443  
(Cotton-Linen Chambray)

**Cotton-linen chambray** A refined blend of cotton and linen highlights the natural beauty and texture of this fabric. Light, breathable and comfortably structured, it offers natural flexibility without added stretch. With its crisp yet soft handfeel and fluid drape, it’s perfect for both relaxed and refined looks. Easy to care for, more sustainable and biodegradable, it’s a timeless four-season essential for modern shirting. This season, the collection expands with two new 365 fabrics and one 365 Seasonal.



SH00443 (Cotton-Linen Chambray)



SH00440, SH00439 & SH00438  
(Yoga stretch cotton Oxfords by Albini)

**Yoga natural stretch cotton Oxfords by Albini**  
This season, the classic Oxford weave returns with a fresh update of 365 fabrics. Crafted with the same innovative stretch finish for natural flexibility, the collection now features new striped colours that add a contemporary touch to this timeless favourite. Perfect for relaxed yet polished looks that combine comfort and sophistication.



SH00444 (Cotton Seersucker)

**Cotton seersucker** The distinctive seersucker weave makes an exceptional choice for shirting, prized for its signature crinkled texture that allows air to circulate and keep you cool. Naturally resistant to wrinkles, it offers an easygoing yet timeless aesthetic. Now introduced in a 365 seasonal light blue striped version, crafted from lightweight 100% cotton.

**Washed cotton denim** A new addition to the 365 collection, this slubbed denim twill captures the character of a well-worn vintage aesthetic. Made from refined cotton with added stretch for comfortable movement and a soft handfeel. With a weight of 350gr, the fabric has the perfect structure for creating an overshirt. The result is a versatile, smart-casual quality that delivers effortless comfort and timeless appeal, ideal for year-round wear.



SH00445 (Washed cotton denim)



SH00445 (Washed cotton denim)



## New design option: one-piece button down collar style

Designed for ease and quiet refinement, the one-piece button-down collar drapes smoothly and settles into a relaxed roll. It brings character without effort, making it the perfect collar for days that transition from work to weekend.

Live from April.



## New design option: 2-button collar style

Now available on both the semi-cutaway and cutaway collar styles **in heights 4.0 cm and 4.8 cm**. With its higher collar stand and second fastening button, this collar maintains a structured shape while remaining comfortable and easy to wear. A refined detail that adds presence to both casual shirting and more formal combinations.

Live from April.



Essential pieces:  
for the considered man

# Seersucker shirt

**Look SH00444** White cotton seersucker with  
l.blue stripes shirt - LIN001 White linen plain weave  
Bermuda - SNG07 White sneaker grain calf  
slip-on sneakers *(Made in Portugal)*



Light, textured and effortlessly refined.

This **white cotton seersucker with light-blue stripes (SH00444)** elevates warm-weather dressing with its airy drape and distinctive surface. The natural puckering keeps the look fresh and easy while lending a subtle touch of sophistication.



A modern interpretation of a summer classic. This **mid-blue cotton-linen chambray shirt (SH00442)** is crafted from a breathable, lightly textured fabric that offers a cool and relaxed feel. The **one-piece collar** elevates the shirt with subtle sophistication.



**Look SH00442** M.blue cotton-linen chambray  
shirt - Navy linen plain weave Bermuda - SDE26  
midnight blue suede boat shoe sneakers *(Made in Portugal)*



# Cotton-linen shirt



# Colours collection

## 365 Seasonal

This season's shirt collection celebrates lightness and colour.

Crafted from airy cottons in refined twills and crisp poplins, the range stands out with a rich mix of designs, from bold checks and classic glencheck to lively stripes and bright solid shades. Many of these qualities are sourced from Thomas Mason, celebrated for its sharp designs and exceptional handfeel. Each fabric is lightweight, breathable and vibrant, offering a fresh expression for every mood and occasion.



SH00490 (Compact cotton)

**Compact cotton** A crisp two-tone gingham check in a light twill weave crafted from fine 70s yarns. Naturally breathable and durable, it has a smooth handfeel and an elegant drape suited to both work and casual wear. This 100% cotton quality is easy to care for and available in five tattersall checks.



SH00451, SH00460, SH00465, SH00491, SH00475, SH00457, SH00446, SH00458, SH00468, SH00480 & SH00454

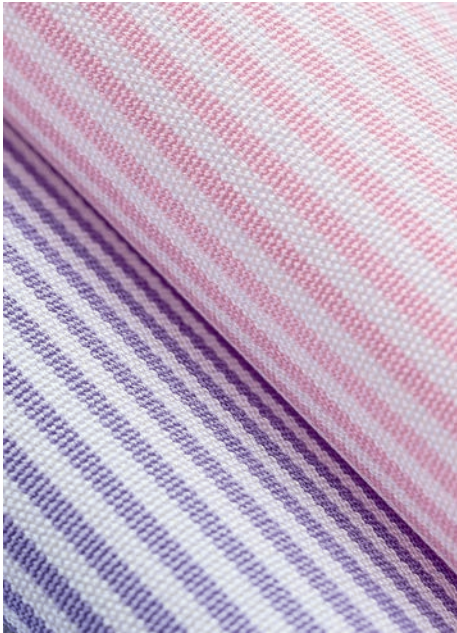


SH00468 (Light cotton)



SH00458 (Light cotton)

**Light cotton** Light and delicate, this superfine zephyr cotton poplin has a smooth, balanced structure and a clean look. Offered in a bold colour range, it captures the distinctive character of Thomas Mason. Available in six micro-houndstoots, seven micro-checks and twelve gingham checks.



SH00450 & SH00451 (Fine cotton)

**Fine cotton bengal stripes** A classic of the Thomas Mason world, this poplin pairs brilliant whiteness with exceptional handle, vibrancy and durability. Available in six bengal stripes, it offers a crisp, enduring expression of iconic heritage.



SH00473, SH00479 & SH00476 (Light cotton)

**Fine cotton bold stripes** This cotton poplin blends heritage with modern refinement. Its 2-ply construction delivers crisp definition in stripes and rich depth in solids. Crafted from fine twisted yarns, it achieves a compact yet breathable feel with lasting softness and durability. Available in four bold stripe designs for sharp, versatile styling.



SH00454, SH00453 & SH00452 (Fine cotton)



SH00496 & SH00491 (Fine compact 2-ply cotton twill)

**Fine compact cotton** Crafted with a Royal twill density, this 2-ply cotton twill offers a luxurious touch with a smooth, comfortable feel. The range includes one check, three gingham checks and three tattersall checks, each bringing its own character and polished handfeel.



SH00491 & SH00485 (Fine compact cotton)



# Spring & Summer ties

Every tie tells its own story of craftsmanship and character. This season's collection of **17 new ties** explores three refined weaves that each capture a different facet of modern elegance, from the intricate depth of jacquard to the textured charm of basketweave and the airy sophistication of open weave. Each tie has been thoughtfully developed to perfectly match our seasonal suit and jacket collections, allowing for seamless, elevated combinations.

The **jacquard** ties celebrate the subtle art of woven design, blending tradition with quiet sophistication. Available in pure silk or a refined cotton-silk composition, they range from timeless navy squares with crisp contrast to tonal geometrics that reveal their pattern only in movement. For those who favour a touch of colour, playful interpretations in light blue and cognac, green and off-white, or autumnal red add richness and warmth to festive occasions. Each piece combines tactile depth with polished elegance, making it a fitting companion for weddings and formal moments.



TS850 (Basketweave)



TS847, TS838 & TS837



TS843 & TS845 (Basketweave)

In contrast, the **basketweave** series stands out through its distinctive structure — a subtle yet striking texture that balances polish with contemporary appeal. Bold striped versions in cobalt, copper, green or red make a confident statement, while multi-coloured variations in teal or slate blue introduce a playful note to celebratory dressing. For a more understated approach, the mocha and copper silk options exude quiet elegance, ideal for eveningwear or refined business attire.

Finally, the **open weave** ties embody lightness and refinement. The cotton-silk construction reveals a delicate interplay of fibres that feels both natural and luxurious. The ivory variation in particular showcases the beauty of understatement, its texture softly catching the light — a perfect choice for summer weddings and warm-weather celebrations.

Together, these ties form a curated expression of Italian craftsmanship: tactile, timeless and sophisticated, designed for gentlemen who understand that elegance begins in the details.

# Pocket squares

An ode to silk artistry and timeless design, our selection of **nine pocket squares** celebrate the craftsmanship of master printers in Como, Northern Italy. Each piece is thoughtfully designed to complement our seasonal suit and jacket collections, ensuring effortless, harmonious combinations.

Each piece is brought to life on 100% silk twill, where intricate motifs unfold in vibrant seasonal tones — from classic paisleys and chain-inspired designs to bold tulip prints and contemporary interpretations of heritage patterns.



PS620 & PS613



PS624, PS623 & PS622



PS621

Soft, lustrous and full of character, these pocket squares offer endless versatility. They serve as a refined alternative for men who prefer to forgo a tie, or as a sophisticated accent for those who enjoy pairing their neckwear with a matching detail.

Available in nine colours, the collection lends itself perfectly to weddings, formal occasions or simply moments when elegance deserves to be seen.